
CUMNOR PARISH COUNCIL

ACOUSTIC REPORT

A420 CUMNOR

Client: Cumnor Parish Council

Report Ref: P4416-R1-21

Issue Date: 15th October 2021

Document Status: Version21



This page has been left blank intentionally

DATE ISSUED: 15th OCTOBER 2021


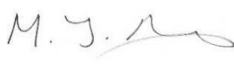
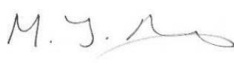
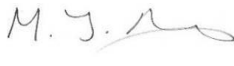
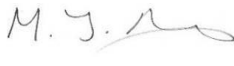
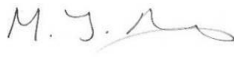
REPORT REFERENCE P4416-R1-V2

CUMNOR PARISH COUNCIL

ACOUSTIC REPORT

A420 CUMNOR

REPORT VERSION CONTROL:

Document Reference	Date	Report Prepared by	Report Checked by	Report Authorised by
P4416-R1-V1	10/09/2021	M. MAY, BSc (Hons), AMIOA	M. J. Malone, MIOA	M. J. Malone, MIOA
				
P4416-R1-V2	15/10/2021	M. J. Malone, MIOA	M. J. Malone, MIOA	M. J. Malone, MIOA
				

This report has been prepared by NoiseAir Limited with all reasonable skill, care and diligence, within the terms of the contract with the client. The report is confidential to the Client and NoiseAir Limited accept no responsibility of whatever nature to third parties to whom this report may be made known.

No part of this document may be reproduced without the prior written approval of NoiseAir Limited.

This page has been left blank intentionally

CONTENTS

1	INTRODUCTION	1
2	ACOUSTIC SURVEY	3
3	3D SOUND MODEL	9
4	DISCUSSION	14
5	CONCLUSIONS	16

APPENDICES

APPENDIX A - REPORT LIMITATIONS

APPENDIX B – METER READINGS

APPENDIX C – 3D SOUND MAPS

APPENDIX D - GLOSSARY

This page has been left blank intentionally

1 INTRODUCTION

- 1.1.1 By instruction from Cumnor Parish Council ('the client'), NoiseAir was commissioned to monitor noise emissions emanating from a section on the A420 (specifically the double carriageway stretch running through the Cumnor region), herein referred to as: 'the A420'.
- 1.1.2 It is understood that the subject section of the A420 has a national speed limit of 70 mph and accommodates a heavy flow of traffic.
- 1.1.3 The aforementioned section of the A420 is highlighted below within **Figure 1**.



Figure 1: Aerial view of the A420 running through Cumnor.

- 1.1.4 The nature of noise has been described by the client as:
- “The road is busy during the week with a mixture of lorries and cars, with most of the noise seemingly coming from the tyres running along the surface, which is old and worn. But on sunny weekends or public holidays, particularly in the afternoon, the road is used by motorcyclists and sports car drivers driving out of Oxford at very high

speeds, and then, in many cases, exiting at Cumnor Village and speeding back at the same direction.”

- 1.1.5 As such it was requested that noise monitoring equipment be installed and left monitoring continuously over a duration of 10 days.
- 1.1.6 The measurements obtained throughout the monitoring duration have been used to construct a 3D sound model, using noise mapping software ‘SoundPlan™’ to demonstrate the likely propagation of noise from the A420, in relation to local surroundings.
- 1.1.7 A series of noise contour maps generated within SoundPlan™ are provided with in the appendix of this report, and visually demonstrate the calculated noise propagation from the A420 running through Cumnor.

2 ACOUSTIC SURVEY

2.1 Noise Monitoring

2.1.1 In-order to conduct the acoustic report, NoiseAir carried out fixed position (unattended) noise monitoring between the dates 23rd July 2021 and 2nd August 2021 at a location adjacent to the A420 and is referred to as ML1.

2.1.2 The noise monitoring location, ML1 shown in **Figure 2** below, with a summary of details provided with **Table 1**:

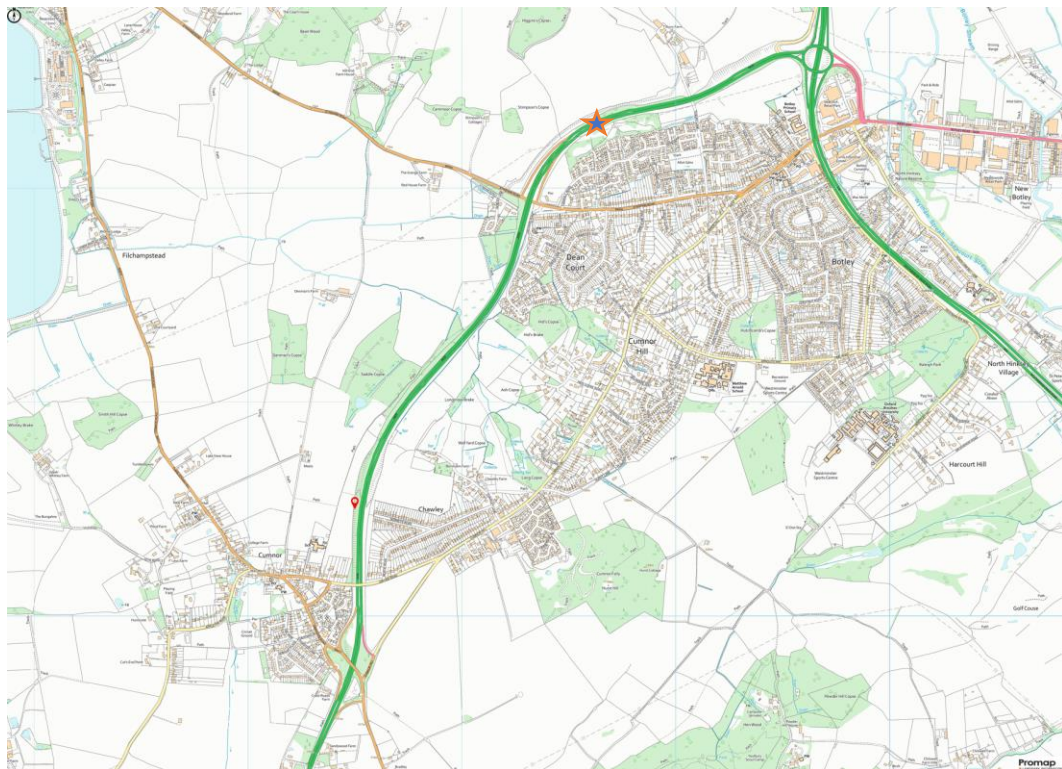


Figure 2: Measurement Location.

ML1 ★

Table 1: Summary of Noise Monitoring Locations				
Monitor Location Number	Location Description	Time Period Monitored		Attended or Unattended Monitoring
		Start	End	
ML1	Secured to the safety barrier located directly adjacent to the A420 at approximately 1m from the ground.	17:15 23/07/21	12:00 02/08/21	Unattended

- 2.1.3 ML1 was selected to be representative of noise levels emissions specifically emanating from the A420 at the approximate location advised by the client.
- 2.1.4 The microphone at ML1 was secured to the safety barrier located directly adjacent to the A420 at approximately 1 m from the ground.
- 2.1.5 Data from this location will be used for noise propagation calculations within the aforementioned 3D sound model.
- 2.1.6 All noise measurements were made using a Class 1, integrating sound level meter (SLM).
- 2.1.7 The acoustic equipment was calibrated to comply with Section 4.2 of BS7445-1:2003¹ before and after the noise monitoring periods.
- 2.1.8 Details of the SLM's and associated field calibration can be found in **Table 2** below:

Table 2: Summary of SLM's used for survey and associated field calibration						
SLM (Serial Number)	Preamp (Serial Number)	Microphone (Serial Number)	Calibrator (Serial Number)	Start Calibration	End Calibration	Drift
NOR140 (1405015)	NOR1209 (14517)	NOR1225 (42327)	B&K4231 (2431761)	-26.4 dB	-26.2 dB	0.2 dB

- 2.1.9 The weather conditions were noted to be as outlined in **Table 3** during the site visits at the start and end of the monitoring periods.

Table 3: Summary of weather conditions noted at the start and end of the monitoring duration.		
	23 rd July 2021	2 nd August 2021
Roads (Wet / Dry)	Dry	Dry
Temperature (°C)	24	18
Wind speed (ms ⁻¹) & Direction	ENE Steady <5, Gusts up to 6.3	SE Steady <5, Gust up to 2.7
Cloud Cover (Approx. %)	40	60
Humidity (%)	56	63

¹ BS7445-2003 "Description and measurement of environmental noise – Part 1: Guide to quantities and procedures.

2.1.10 Measured A-weighted² L_{eq} ³ and L_{Amax} ⁴ noise levels are set out in full in **Appendix B**.

2.1.11 Attending the development site at the start and end of the survey monitoring period provided opportunity for observations and detailed notes to be made of the significant noise sources which contribute to each of the measured levels.

Noise Climate

The dominant noise source at noted at the measurement location was from road traffic travelling at high speed along the adjacent main road. A subjective impression, regarding the characteristic of the noise source was: primarily aerodynamic tire noise; however, engine noise from larger vehicles such as heavy goods vehicles (HGV's) and motor noise from motorbikes was a prominent feature. On occasion loud exhaust noise was also audible at ML1.

2.2 Measured Sound Levels

2.2.1 Measured sound levels obtained at monitoring location ML1 during respective daytime and night-time periods across the full measurement duration are presented below within **Table 4**.

Table 4: Average Measured Daytime and Night-time Noise Levels				
Monitoring Location	Time	Measured Noise Level		
		dB $L_{Aeq,16hour}$ / dB $L_{Aeq,8hour}$	dB $L_{Aeq,1hour}$ / dB $L_{Aeq,15mins}$	dB L_{Amax}
ML1	07:00-23:00	82.5 – 85.4	78.1 – 87.5	102.2 – 110.8
	23:00-07:00	75.9 – 79.4	63.4 – 85.4	100.4 – 105.0

2.2.2 Data is shown in **Figure 3** detailing a level vs. time graph of the recorded L_{Aeq} , and L_{Amax} sound level over 15-minute time periods at ML1.

² An electronic filter in a sound level meter which mimics the human ear's response to sounds at different frequencies under defined conditions.

³ Equivalent continuous noise level; the steady sound pressure which contains an equivalent quantity of sound energy as the time-varying sound pressure levels.

⁴ The instantaneous maximum noise level recorded for a measurement period.

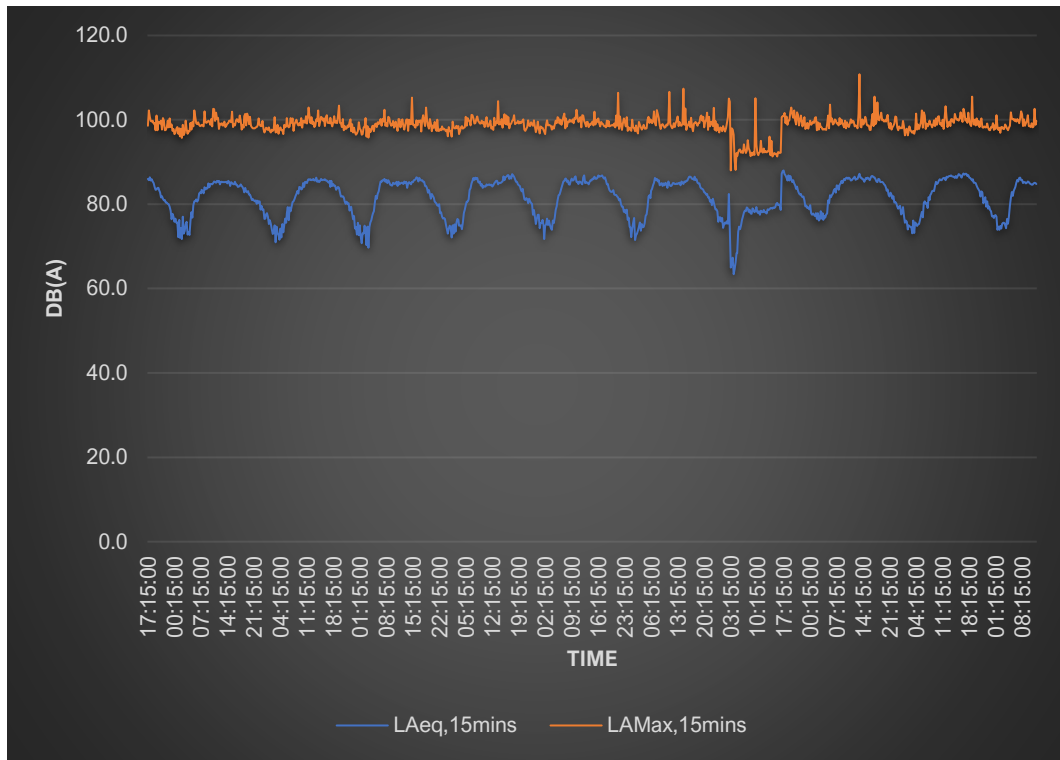


Figure 3: Level vs. time graph showing LAeq and LMax sound levels – ML1.

2.2.3 A histogram showing the distribution of existing dB LAeq,1hour sound levels recorded at ML1 during the daytime is presented in **Figure 4.**

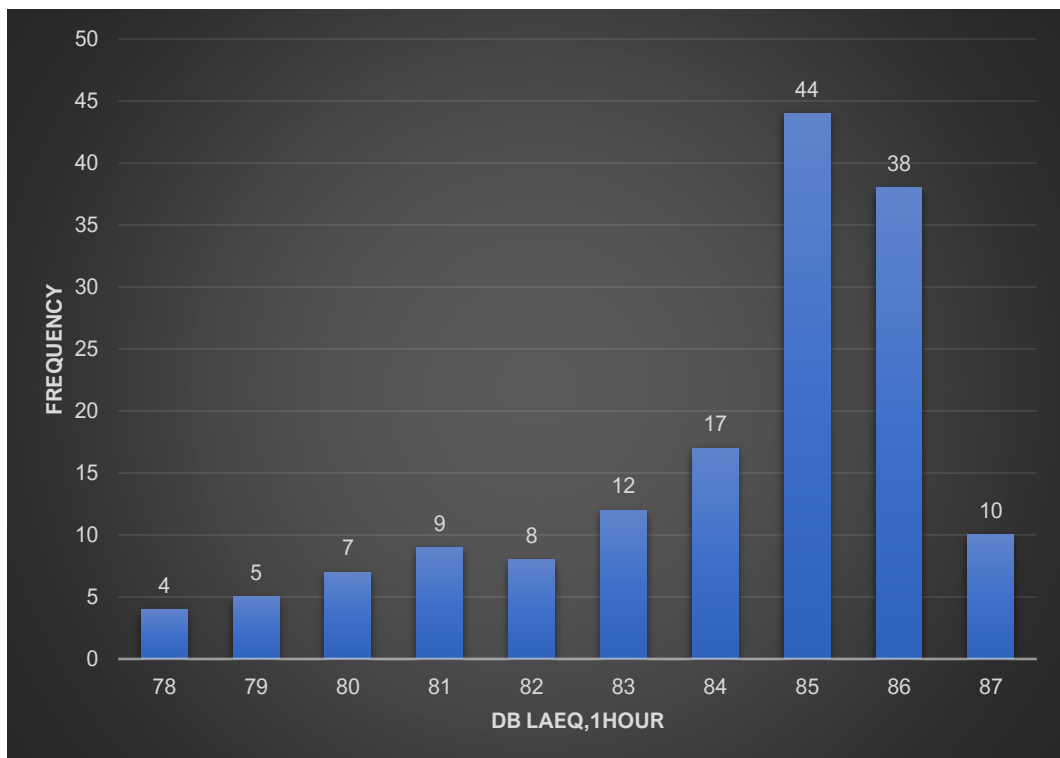


Figure 4: Histogram showing frequency distribution of $L_{Aeq,1hour}$ noise readings at ML1 - 07:00 – 23:00

2.2.4 **Figure 5** details A histogram showing the distribution of existing dB $L_{Aeq,15min}$ sound levels recorded at ML1 during the night-time.

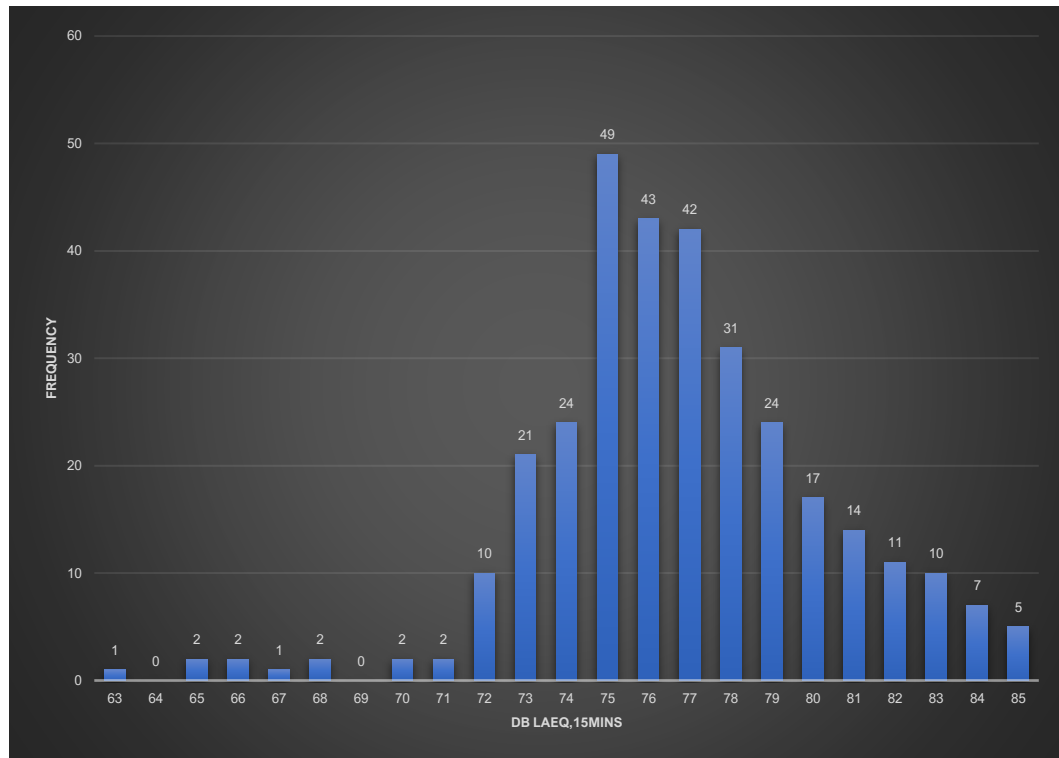


Figure 5: Histogram showing frequency distribution of $L_{Aeq,1hour}$ noise readings at ML1 - 07:00 – 23:00

2.2.5 Distribution of existing dB L_{Amax} sound levels recorded at ML1 during the daytime and night-time are presented within **Figure 6** and **Figure 7** respectively.

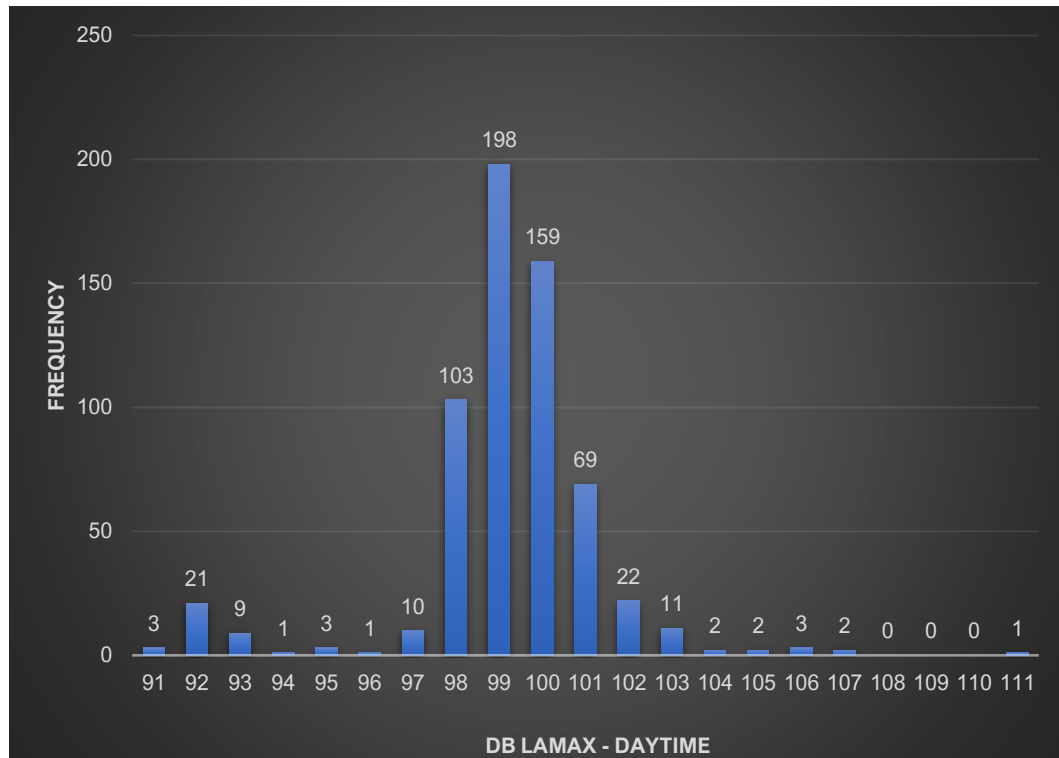


Figure 6: Histogram showing frequency distribution of L_{Amax} noise readings at ML1 - 07:00 – 23:00

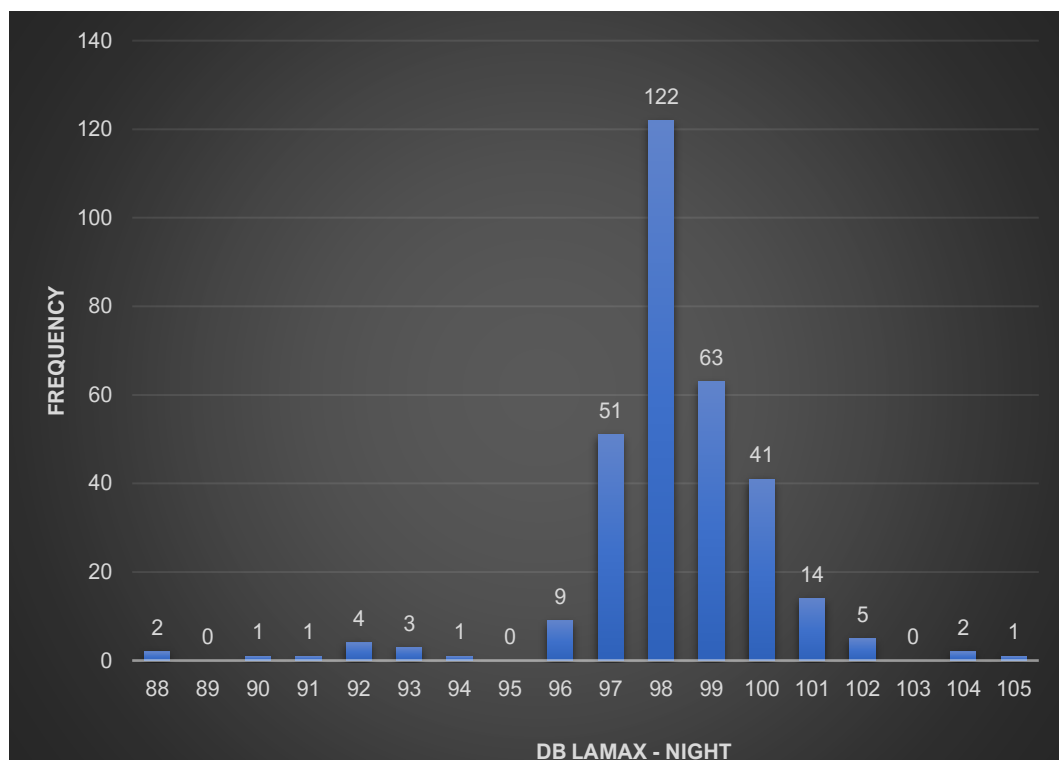


Figure 7: Histogram showing frequency distribution of L_{Amax} noise readings at ML1 - 23:00 – 07:00

3 3D SOUND MODEL

- 3.1.1 A 3D sound model has been constructed in SoundPLAN™ to calculate the predicted noise propagation from vehicle flow on the A420.
- 3.1.2 The model is based on and calibrated against data collected during the survey presented in Section 3.2 of this report and uses the calculation method from ISO 9613-2:1996⁵ to account for varying distance from the noise source and is inclusive of:
- Local LIDAR topographical data;
 - Attenuation afforded to ground effects such as soft or hard surfaces; and,
 - Volume attenuation areas, such as;
 - Build up areas
 - Areas of foliage/vegetation
- 3.1.3 **Table 5** details the noise sources and calibration details adopted within the 3D sound model.

Table 5: Noise Source and Calibration Details – 3D Sound Model		
Noise Source	Source Type	Calibration Description
Traffic Noise – Stretch of A420 running through Cumnor	Line Source	Calibrated to represent respective dB L _{Aeq,16hr} , dB L _{Aeq,8hr} and dB L _{Amax} , as measured onsite at monitoring location ML1.

- 3.1.4 A noise contour plot illustrating the propagation of sound from source to receptor during the day (L_{Aeq,16hour}), night time (L_{Aeq,8hour}) and Daytime/night time L_{Amax} condition is given in **Figure 8, Figure 9, Figure 10 and Figure 11** respectively.
- 3.1.5 A further set of noise contour maps which have been magnified to focus on a smaller area are detailed within **Appendix C**.

⁵ ISO9613-2:1996 “Acoustics – Attenuation of sound during propagation outdoors – Part 2: General method of calculation”

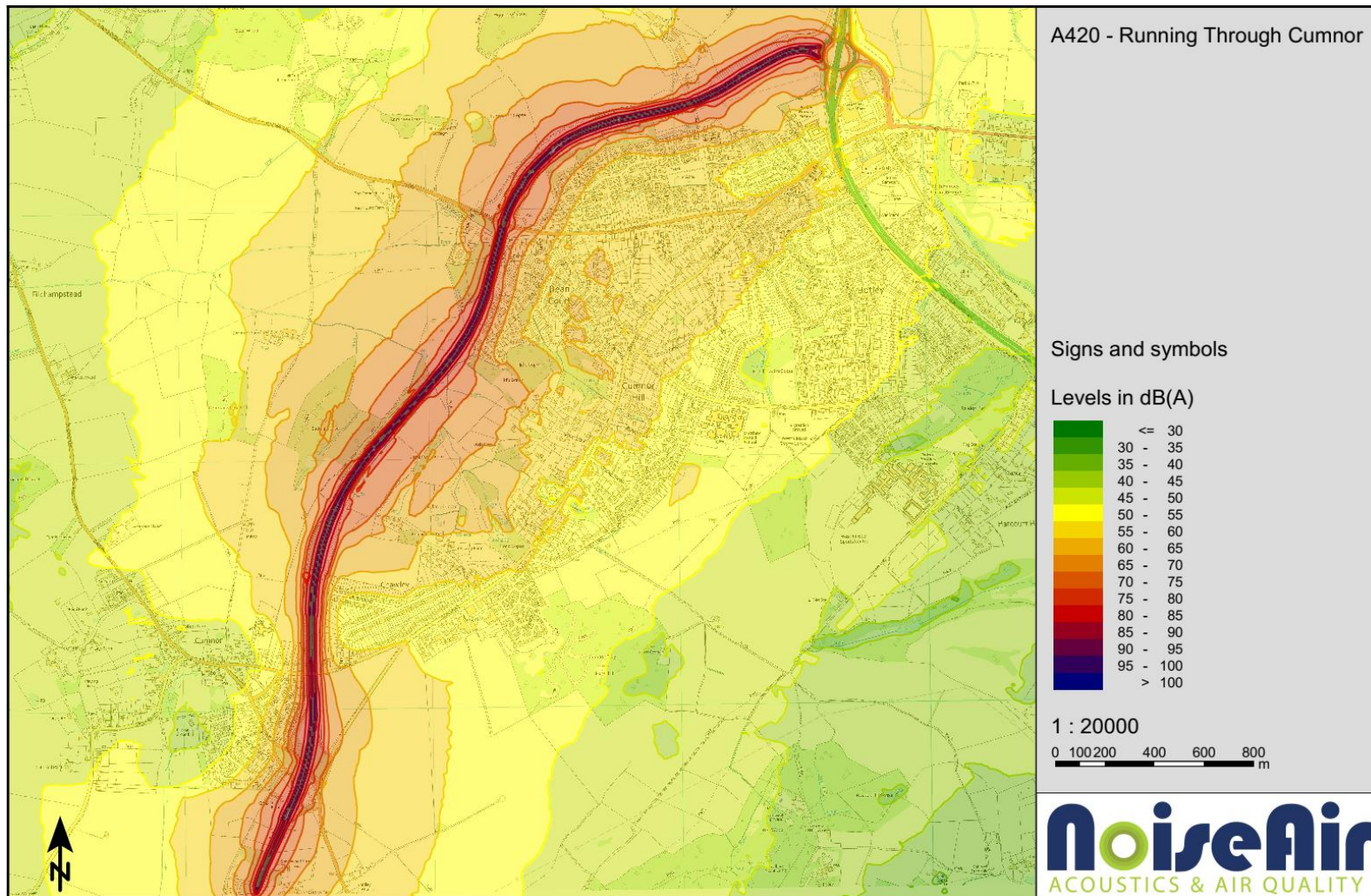


Figure 8: Noise contour plot illustration of the predicted propagation of sound to the parish during the daytime – $L_{Aeq,16hour}$.

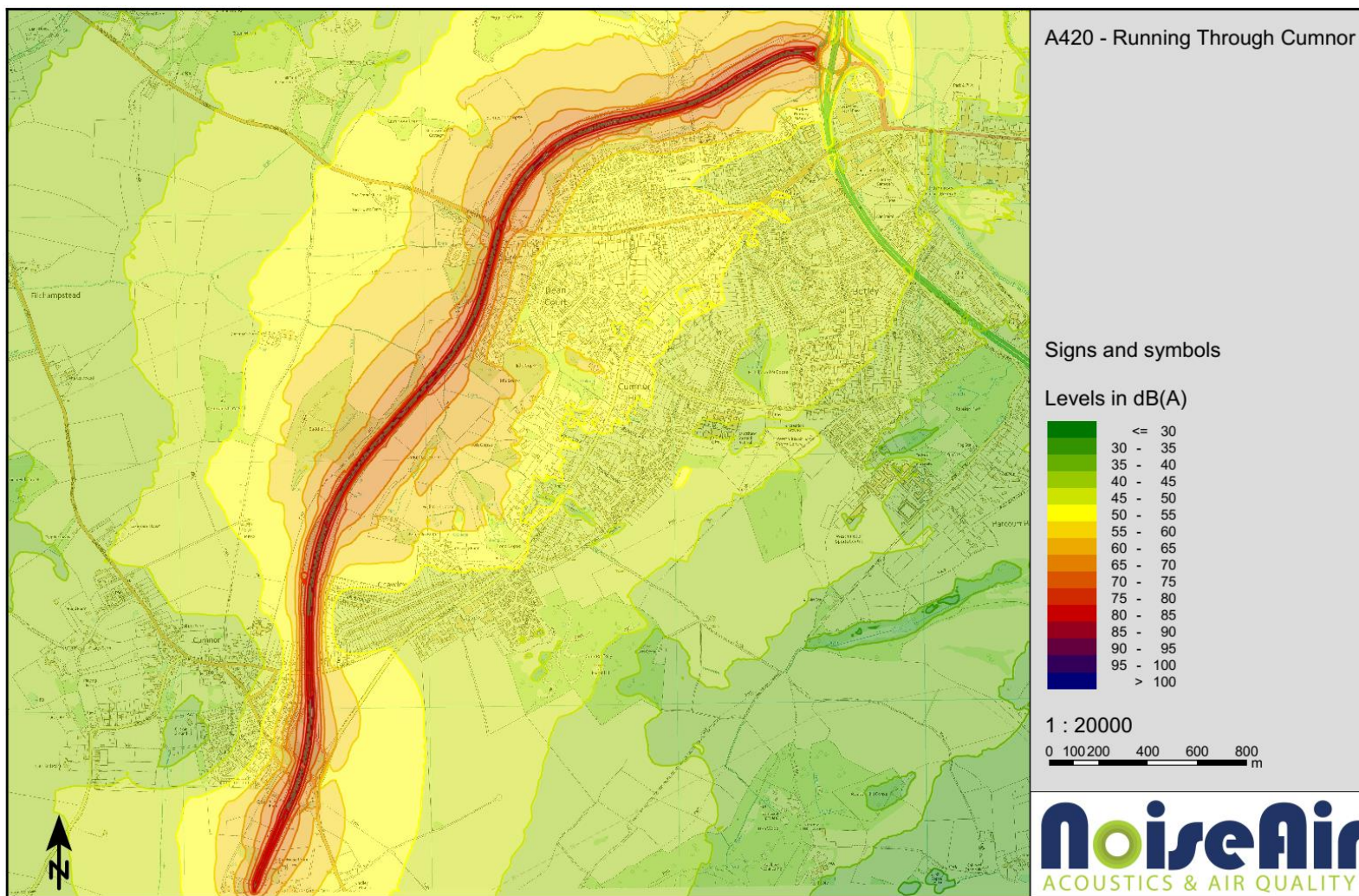


Figure 9: Noise contour plot illustration of the predicted propagation of sound to the parish during the night-time – $L_{Aeq,8hour}$.

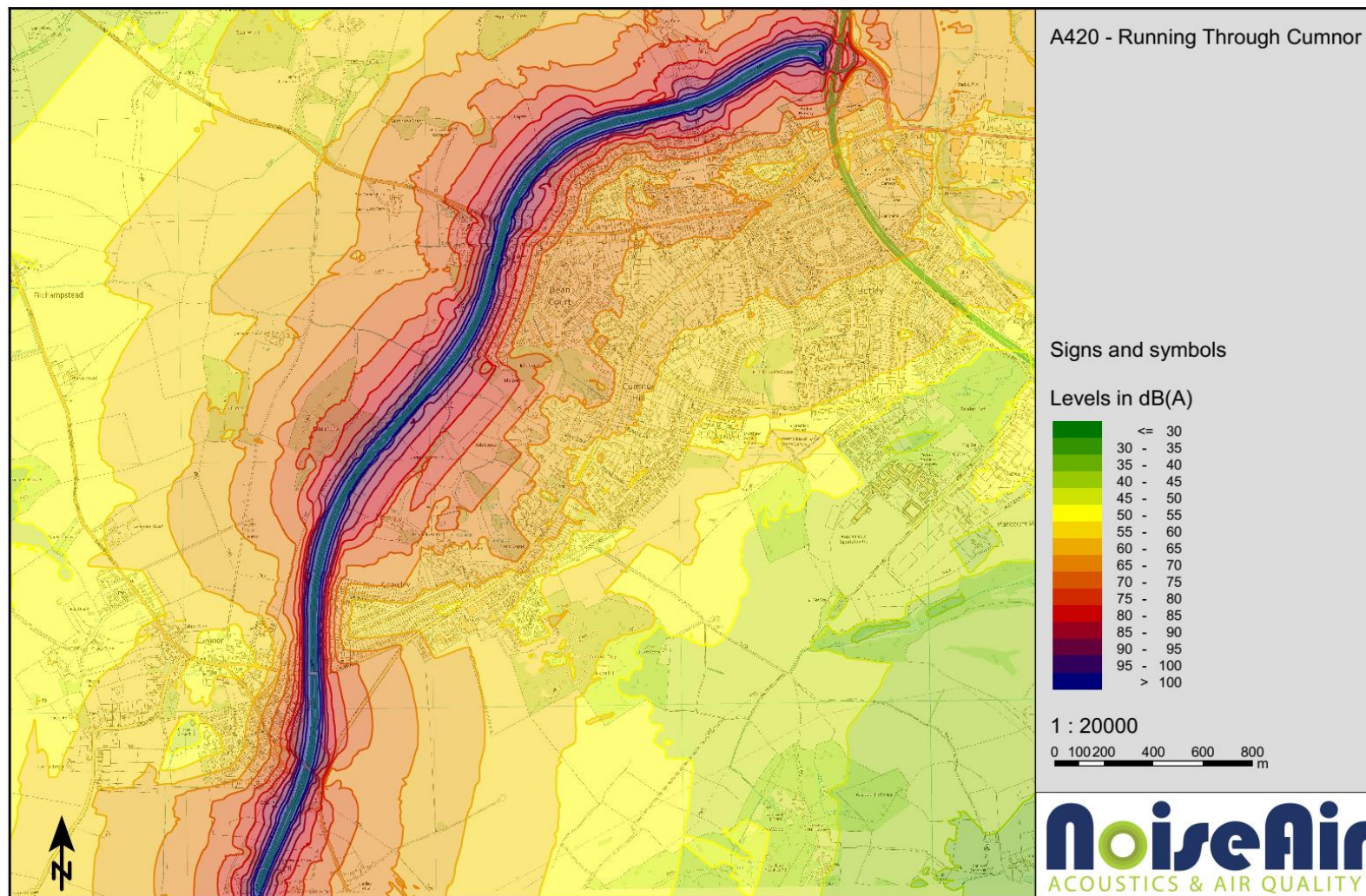


Figure 10 Noise contour plot illustration of the predicted propagation of sound to the parish during the daytime - based on the highest recorded level at $ML1 - L_{max}$.

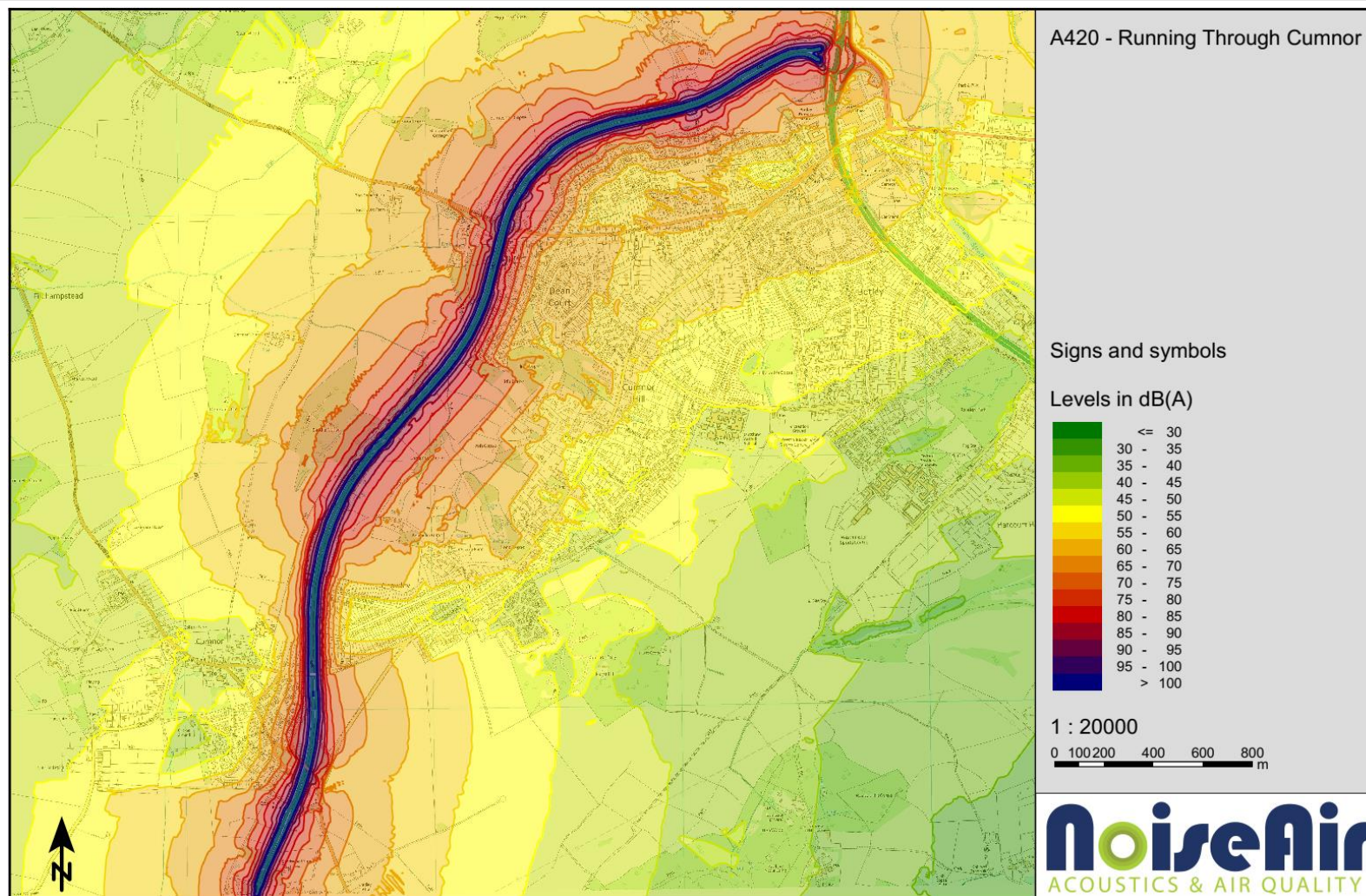


Figure 11 Noise contour plot illustration of the predicted propagation of sound to the parish during the night-time - based on the highest recorded level at $ML1 - L_{Amax}$.

4 DISCUSSION

- 4.1.1 Analysis of the data presented within **section 2.2** indicates that daytime dB $L_{Aeq,1hour}$ and night-time dB $L_{Aeq,15min}$ noise levels (at the roadside measurement location) are most frequently around 85 dB and 75 dB respectively, however; exceedances of these values do occur. Context regarding the regularity of these exceedances can be drawn by referring to the histograms displayed within **Figure 4** and **Figure 5**.
- 4.1.2 Similarly, daytime, and night-time dB L_{Amax} noise levels are demonstrated to be most frequent around 99 dB and 98 dB at the roadside respectively, however; again, exceedance of the stated values are common and context regarding the regularity of these exceedances can be drawn by referring to the histograms displayed within **Figure 6** and **Figure 7**.
- 4.1.3 To present a conservative assessment, 3D sound modelling has been conducted based on the highest values presented within **Table 4**.
- 4.1.4 Noise contour maps have been presented within **section 3** and demonstrate the likely dispersion of noise from the subject section of the A420 in relation to the surrounding environment.
- 4.1.5 On review of the noise contour maps provided within **section 3**, the following interpretations can be made:
- Initial noise propagation, in the direction south, southeast and east of the A420, demonstrates that, attenuation of noise emissions is typically greater than noise emissions propagating towards the north, northwest and west.
 - Towards the south end of the subject section, particularly around Cumnor village, the above observation is largely reversed.
 - It is considered that, the propagation attenuation pattern identifiable within the noise contours, is largely due to dispersion of sound energy, attributed by scattering within built up areas.
 - Some Initial reflection of energy is also considered to be likely from structures located closest to the noise source.
 - These interpretations can be visualised by observing the darker coloured areas, and by referring to the coloured decibel scale provided within each noise contour. Additionally, it is considered that the above interpretations, are demonstrated throughout by observing the more concentrated red and purple areas display which

tend to follow the outline of the developed areas and comparing to the more rural locations towards the north, northwest and west of the A420 subject section.

- In respect of Cumnor Village, located towards the southern end of the A420 subject section, attenuation of noise levels appears to rapidly increase. It is believed that this is due to a change in high topography (running north to south), which reduces the elevation of the noise source in relation to local surroundings.
- The degree of attenuation displayed around Cumnor village area is most likely due to traffic travelling through a cutting in the land, which is likely to be a significant influence due to screening of noise levels close to the source.

4.1.6 As previously mentioned within **Section 3.1.5**, noise contour maps which have been magnified to focus on a smaller area are detailed within **Appendix C**.

4.1.7 When reviewing the information displayed within the contour mapping it is also useful to refer to noise criteria detailed with common guidance and assessment standards such as the World Health Organisation (WHO) guidelines for community noise, BS 8233:2014 'guidance on sound insulation and noise reduction for buildings', Pro-PG: Planning and Noise 2017 as well as others.

4.1.8 It is generally desired that noise levels do not exceed the lower guideline limit of 50 $L_{Aeq,T}$ dB (for people being moderately annoyed) or upper limit of 55 dB $L_{Aeq,T}$ (for people being seriously) as advised by WHO within external amenity areas.

4.1.9 Additionally, it is generally considered that sound reduction achievable via a partially open window may be up to 15 dB. As such when relying on partially open windows to achieve internal resting criteria (outlined within BS 8233:2014) noise levels at the façade of a building should not exceed 50 dB $L_{Aeq,16hr}$ during the daytime and 45 dB $L_{Aeq,8hr}$ during the night. As per the guidance presented within Pro-PG: Planning and Noise 2017, regular individual noise events should not exceed 45 dB L_{Amax} internally on more than 10 occasions during the night and noise level at the external façade should not be greater than 60 dB 45 dB L_{Amax} .

5 CONCLUSIONS

- 5.1.1 NoiseAir has carried out monitoring of noise emissions emanating from a section on the A420 (specifically the double carriageway area running in the Cumnor locality), herein referred to as: 'the A420' on the instruction of Cumnor Parish Council.
- 5.1.2 Noise contour maps based upon measurements obtained throughout the monitoring period have been presented within **section 3** and demonstrate the likely propagation of noise from the subject section of the A420 in relation to the surrounding environment.
- 5.1.3 Analysis of the data presented within **section 2.2** indicates that daytime dB $L_{Aeq,1hour}$ and night-time dB $L_{Aeq,15min}$ noise levels at the roadside, are most frequently around 85 dB and 75 dB respectively, however; exceedances of these values do occur. Context regarding the regularity of these exceedances can be drawn by referring to the histograms displayed within **Figure 4** and **Figure 5**.
- 5.1.4 Similarly, daytime, and night-time dB L_{Amax} noise levels are demonstrated at the roadside, to be most frequent around 99 dB and 98 dB respectively, however; again, exceedance of the stated values are common and context regarding the regularity of these exceedances can be drawn by referring to the histograms displayed within **Figure 6** and **Figure 7**

This page has been left blank intentionally

APPENDIX A - REPORT LIMITATIONS

This page has been left blank intentionally

This Report is presented to Cumnor Parish Council and may not be used or relied on by any other person or by the client in relation to any other matters not covered specifically by the scope of this report.

Notwithstanding anything to the contrary contained in the report, NoiseAir Limited is obliged to exercise reasonable skill, care and diligence in the performance of the services required by Cumnor Parish Council and NoiseAir shall not be liable except to the extent that it has failed to exercise reasonable skill, care and diligence, and this report shall be read and construed accordingly.

This report has been prepared by NoiseAir Limited. No individual is personally liable in connection with the preparation of this report. By receiving this report and acting on it, the client or any other person accepts that no individual is personally liable whether in contract, tort, for breach of statutory duty or otherwise.

The conclusions and recommendations contained in this report are based upon information provided by others and upon the assumption that all relevant information has been provided by those parties from who it has been requested and that such information is accurate. Information obtained by NoiseAir Limited has not been independently verified by NoiseAir Limited unless otherwise stated in the report and should be treated accordingly.

Where assessments of works or costs identified in this report are made, such assessments are based upon the information available at the time and where appropriate are subject to further investigations or information which may become available.

Where / if estimates and projects are made within this report, are made based on reasonable assumptions as of the date of this report, such statements however by their very nature involve risks and uncertainties that could cause actual results to differ materially from the results predicted. NoiseAir Limited specifically does not guarantee or warrant any estimates or projects contained in this report.

DISCLAIMER- This report was prepared by NoiseAir Limited. The material in it contains NoiseAir Limited best judgment in light of the information available at the time of preparation of this report. Any use which a third party makes of this report, or any reliance on, or decisions based on it are the responsibility of such third parties. NoiseAir Limited accept no responsibility for damages, if any, suffered by any third party as a result of decisions made or actions taken based on this report.

This page has been left blank intentionally

APPENDIX B – METER READINGS

This page has been left blank intentionally

ML1

Start Date	Start Time	Duration	LAeq	LAFMax
dd/mm/yyyy	hh:mm:ss	hh:mm:ss	dB	dB
23/07/2021	17:15:00	00:15:00	86.0	98.6
23/07/2021	17:30:00	00:15:00	85.7	102.2
23/07/2021	17:45:00	00:15:00	86.4	100.7
23/07/2021	18:00:00	00:15:00	85.6	99.7
23/07/2021	18:15:00	00:15:00	85.9	99.6
23/07/2021	18:30:00	00:15:00	85.4	99.8
23/07/2021	18:45:00	00:15:00	85.0	99.1
23/07/2021	19:00:00	00:15:00	84.1	99.2
23/07/2021	19:15:00	00:15:00	83.4	97.5
23/07/2021	19:30:00	00:15:00	83.5	101.0
23/07/2021	19:45:00	00:15:00	83.9	97.5
23/07/2021	20:00:00	00:15:00	83.9	99.6
23/07/2021	20:15:00	00:15:00	83.3	99.5
23/07/2021	20:30:00	00:15:00	82.8	99.1
23/07/2021	20:45:00	00:15:00	81.6	99.8
23/07/2021	21:00:00	00:15:00	81.9	97.7
23/07/2021	21:15:00	00:15:00	81.3	100.4
23/07/2021	21:30:00	00:15:00	80.9	99.8
23/07/2021	21:45:00	00:15:00	81.0	97.5
23/07/2021	22:00:00	00:15:00	80.4	97.6
23/07/2021	22:15:00	00:15:00	80.4	98.2
23/07/2021	22:30:00	00:15:00	80.1	99.8
23/07/2021	22:45:00	00:15:00	80.0	98.2
23/07/2021	23:00:00	00:15:00	79.4	100.3
23/07/2021	23:15:00	00:15:00	78.5	98.3
23/07/2021	23:30:00	00:15:00	76.4	98.9
23/07/2021	23:45:00	00:15:00	77.7	97.4
24/07/2021	00:00:00	00:15:00	77.0	97.8
24/07/2021	00:15:00	00:15:00	75.8	96.6
24/07/2021	00:30:00	00:15:00	76.6	96.9
24/07/2021	00:45:00	00:15:00	75.6	97.9
24/07/2021	01:00:00	00:15:00	75.7	98.3
24/07/2021	01:15:00	00:15:00	72.2	96.7
24/07/2021	01:30:00	00:15:00	76.3	98.0
24/07/2021	01:45:00	00:15:00	72.0	96.1
24/07/2021	02:00:00	00:15:00	74.3	97.9
24/07/2021	02:15:00	00:15:00	71.7	95.7
24/07/2021	02:30:00	00:15:00	77.0	98.8
24/07/2021	02:45:00	00:15:00	73.0	96.4
24/07/2021	03:00:00	00:15:00	73.6	97.0
24/07/2021	03:15:00	00:15:00	75.3	99.8
24/07/2021	03:30:00	00:15:00	75.8	97.8
24/07/2021	03:45:00	00:15:00	72.8	96.7
24/07/2021	04:00:00	00:15:00	73.4	97.4
24/07/2021	04:15:00	00:15:00	72.7	97.2
24/07/2021	04:30:00	00:15:00	76.0	99.3
24/07/2021	04:45:00	00:15:00	78.1	97.7
24/07/2021	05:00:00	00:15:00	76.8	99.5

Start Date	Start Time	Duration	LAeq	LAFMax
dd/mm/yyyy	hh:mm:ss	hh:mm:ss	dB	dB
24/07/2021	05:15:00	00:15:00	79.8	98.4
24/07/2021	05:30:00	00:15:00	80.7	102.2
24/07/2021	05:45:00	00:15:00	80.7	100.7
24/07/2021	06:00:00	00:15:00	81.1	99.2
24/07/2021	06:15:00	00:15:00	80.6	99.0
24/07/2021	06:30:00	00:15:00	81.0	99.4
24/07/2021	06:45:00	00:15:00	82.5	98.8
24/07/2021	07:00:00	00:15:00	82.8	98.5
24/07/2021	07:15:00	00:15:00	82.6	98.6
24/07/2021	07:30:00	00:15:00	83.4	98.8
24/07/2021	07:45:00	00:15:00	83.1	98.7
24/07/2021	08:00:00	00:15:00	82.6	98.4
24/07/2021	08:15:00	00:15:00	84.0	102.0
24/07/2021	08:30:00	00:15:00	83.5	99.4
24/07/2021	08:45:00	00:15:00	83.9	99.3
24/07/2021	09:00:00	00:15:00	83.7	99.5
24/07/2021	09:15:00	00:15:00	84.9	99.8
24/07/2021	09:30:00	00:15:00	84.0	99.6
24/07/2021	09:45:00	00:15:00	84.8	98.8
24/07/2021	10:00:00	00:15:00	84.8	100.2
24/07/2021	10:15:00	00:15:00	84.7	98.4
24/07/2021	10:30:00	00:15:00	85.0	102.6
24/07/2021	10:45:00	00:15:00	85.4	102.5
24/07/2021	11:00:00	00:15:00	85.2	99.7
24/07/2021	11:15:00	00:15:00	85.1	101.7
24/07/2021	11:30:00	00:15:00	85.5	100.2
24/07/2021	11:45:00	00:15:00	85.3	100.5
24/07/2021	12:00:00	00:15:00	85.5	97.8
24/07/2021	12:15:00	00:15:00	84.7	99.1
24/07/2021	12:30:00	00:15:00	85.3	98.9
24/07/2021	12:45:00	00:15:00	85.3	99.2
24/07/2021	13:00:00	00:15:00	85.2	98.7
24/07/2021	13:15:00	00:15:00	85.2	98.7
24/07/2021	13:30:00	00:15:00	85.2	99.6
24/07/2021	13:45:00	00:15:00	85.2	98.3
24/07/2021	14:00:00	00:15:00	85.3	98.6
24/07/2021	14:15:00	00:15:00	84.9	99.1
24/07/2021	14:30:00	00:15:00	85.5	99.2
24/07/2021	14:45:00	00:15:00	85.2	99.8
24/07/2021	15:00:00	00:15:00	84.3	99.8
24/07/2021	15:15:00	00:15:00	85.2	99.4
24/07/2021	15:30:00	00:15:00	85.0	101.9
24/07/2021	15:45:00	00:15:00	84.8	98.3
24/07/2021	16:00:00	00:15:00	84.7	99.0
24/07/2021	16:15:00	00:15:00	85.3	98.7
24/07/2021	16:30:00	00:15:00	84.6	99.8
24/07/2021	16:45:00	00:15:00	84.6	100.2
24/07/2021	17:00:00	00:15:00	84.1	99.7
24/07/2021	17:15:00	00:15:00	84.2	99.4
24/07/2021	17:30:00	00:15:00	84.3	101.0

Start Date	Start Time	Duration	LAeq	LAFMax
dd/mm/yyyy	hh:mm:ss	hh:mm:ss	dB	dB
24/07/2021	17:45:00	00:15:00	84.7	99.8
24/07/2021	18:00:00	00:15:00	84.3	97.7
24/07/2021	18:15:00	00:15:00	84.0	98.8
24/07/2021	18:30:00	00:15:00	83.5	98.1
24/07/2021	18:45:00	00:15:00	82.8	100.9
24/07/2021	19:00:00	00:15:00	83.9	101.4
24/07/2021	19:15:00	00:15:00	83.0	98.7
24/07/2021	19:30:00	00:15:00	82.8	101.5
24/07/2021	19:45:00	00:15:00	83.1	100.8
24/07/2021	20:00:00	00:15:00	82.3	99.0
24/07/2021	20:15:00	00:15:00	82.3	100.7
24/07/2021	20:30:00	00:15:00	81.7	98.6
24/07/2021	20:45:00	00:15:00	81.0	98.2
24/07/2021	21:00:00	00:15:00	81.2	98.0
24/07/2021	21:15:00	00:15:00	80.9	98.0
24/07/2021	21:30:00	00:15:00	80.7	98.0
24/07/2021	21:45:00	00:15:00	80.9	98.2
24/07/2021	22:00:00	00:15:00	80.1	98.3
24/07/2021	22:15:00	00:15:00	80.8	98.7
24/07/2021	22:30:00	00:15:00	80.3	100.3
24/07/2021	22:45:00	00:15:00	80.7	98.9
24/07/2021	23:00:00	00:15:00	78.7	98.5
24/07/2021	23:15:00	00:15:00	79.6	98.5
24/07/2021	23:30:00	00:15:00	78.6	99.7
24/07/2021	23:45:00	00:15:00	78.8	97.9
25/07/2021	00:00:00	00:15:00	76.5	97.0
25/07/2021	00:15:00	00:15:00	76.6	97.5
25/07/2021	00:30:00	00:15:00	77.6	98.1
25/07/2021	00:45:00	00:15:00	77.9	98.0
25/07/2021	01:00:00	00:15:00	77.0	97.6
25/07/2021	01:15:00	00:15:00	75.3	98.2
25/07/2021	01:30:00	00:15:00	76.2	97.4
25/07/2021	01:45:00	00:15:00	75.4	97.0
25/07/2021	02:00:00	00:15:00	74.1	97.7
25/07/2021	02:15:00	00:15:00	72.9	97.4
25/07/2021	02:30:00	00:15:00	73.3	97.7
25/07/2021	02:45:00	00:15:00	75.0	100.6
25/07/2021	03:00:00	00:15:00	71.0	97.0
25/07/2021	03:15:00	00:15:00	74.7	97.3
25/07/2021	03:30:00	00:15:00	73.3	98.8
25/07/2021	03:45:00	00:15:00	72.6	96.7
25/07/2021	04:00:00	00:15:00	71.6	97.7
25/07/2021	04:15:00	00:15:00	74.2	98.2
25/07/2021	04:30:00	00:15:00	72.1	97.5
25/07/2021	04:45:00	00:15:00	75.3	97.6
25/07/2021	05:00:00	00:15:00	73.3	96.6
25/07/2021	05:15:00	00:15:00	75.1	98.8
25/07/2021	05:30:00	00:15:00	76.6	98.2
25/07/2021	05:45:00	00:15:00	75.6	98.5
25/07/2021	06:00:00	00:15:00	77.8	100.4

Start Date	Start Time	Duration	LAeq	LAFMax
dd/mm/yyyy	hh:mm:ss	hh:mm:ss	dB	dB
25/07/2021	06:15:00	00:15:00	79.3	98.6
25/07/2021	06:30:00	00:15:00	76.2	98.2
25/07/2021	06:45:00	00:15:00	79.2	98.4
25/07/2021	07:00:00	00:15:00	78.3	100.4
25/07/2021	07:15:00	00:15:00	79.5	99.3
25/07/2021	07:30:00	00:15:00	80.5	100.3
25/07/2021	07:45:00	00:15:00	80.7	97.4
25/07/2021	08:00:00	00:15:00	81.2	99.0
25/07/2021	08:15:00	00:15:00	81.9	99.5
25/07/2021	08:30:00	00:15:00	82.4	100.0
25/07/2021	08:45:00	00:15:00	83.1	99.1
25/07/2021	09:00:00	00:15:00	82.5	98.7
25/07/2021	09:15:00	00:15:00	84.1	99.2
25/07/2021	09:30:00	00:15:00	84.0	98.7
25/07/2021	09:45:00	00:15:00	83.5	100.4
25/07/2021	10:00:00	00:15:00	83.6	98.1
25/07/2021	10:15:00	00:15:00	85.0	99.8
25/07/2021	10:30:00	00:15:00	84.1	99.7
25/07/2021	10:45:00	00:15:00	85.3	99.3
25/07/2021	11:00:00	00:15:00	85.2	100.9
25/07/2021	11:15:00	00:15:00	85.0	99.1
25/07/2021	11:30:00	00:15:00	85.8	100.8
25/07/2021	11:45:00	00:15:00	85.9	102.9
25/07/2021	12:00:00	00:15:00	85.8	100.8
25/07/2021	12:15:00	00:15:00	85.9	99.2
25/07/2021	12:30:00	00:15:00	85.7	100.6
25/07/2021	12:45:00	00:15:00	85.8	99.0
25/07/2021	13:00:00	00:15:00	86.0	99.6
25/07/2021	13:15:00	00:15:00	85.6	98.3
25/07/2021	13:30:00	00:15:00	85.6	98.7
25/07/2021	13:45:00	00:15:00	86.3	100.1
25/07/2021	14:00:00	00:15:00	85.3	99.7
25/07/2021	14:15:00	00:15:00	85.6	102.2
25/07/2021	14:30:00	00:15:00	85.2	98.5
25/07/2021	14:45:00	00:15:00	85.5	99.5
25/07/2021	15:00:00	00:15:00	86.0	100.7
25/07/2021	15:15:00	00:15:00	85.7	100.5
25/07/2021	15:30:00	00:15:00	85.8	99.8
25/07/2021	15:45:00	00:15:00	85.8	100.3
25/07/2021	16:00:00	00:15:00	85.9	98.5
25/07/2021	16:15:00	00:15:00	85.6	100.6
25/07/2021	16:30:00	00:15:00	85.6	101.1
25/07/2021	16:45:00	00:15:00	85.3	99.3
25/07/2021	17:00:00	00:15:00	85.1	99.3
25/07/2021	17:15:00	00:15:00	85.5	99.2
25/07/2021	17:30:00	00:15:00	84.1	100.5
25/07/2021	17:45:00	00:15:00	85.5	99.1
25/07/2021	18:00:00	00:15:00	84.3	98.4
25/07/2021	18:15:00	00:15:00	84.8	99.4
25/07/2021	18:30:00	00:15:00	84.3	100.9

Start Date	Start Time	Duration	LAeq	LAFMax
dd/mm/yyyy	hh:mm:ss	hh:mm:ss	dB	dB
25/07/2021	18:45:00	00:15:00	84.4	99.3
25/07/2021	19:00:00	00:15:00	83.4	99.7
25/07/2021	19:15:00	00:15:00	83.8	99.2
25/07/2021	19:30:00	00:15:00	84.1	101.0
25/07/2021	19:45:00	00:15:00	83.9	103.4
25/07/2021	20:00:00	00:15:00	82.8	99.3
25/07/2021	20:15:00	00:15:00	81.8	99.2
25/07/2021	20:30:00	00:15:00	81.8	98.3
25/07/2021	20:45:00	00:15:00	81.9	100.2
25/07/2021	21:00:00	00:15:00	81.6	97.5
25/07/2021	21:15:00	00:15:00	80.6	98.5
25/07/2021	21:30:00	00:15:00	80.1	97.8
25/07/2021	21:45:00	00:15:00	80.6	98.0
25/07/2021	22:00:00	00:15:00	80.1	98.7
25/07/2021	22:15:00	00:15:00	80.2	98.3
25/07/2021	22:30:00	00:15:00	78.5	99.5
25/07/2021	22:45:00	00:15:00	79.2	100.1
25/07/2021	23:00:00	00:15:00	79.4	97.3
25/07/2021	23:15:00	00:15:00	77.8	99.0
25/07/2021	23:30:00	00:15:00	76.4	97.0
25/07/2021	23:45:00	00:15:00	77.2	98.1
26/07/2021	00:00:00	00:15:00	74.2	97.0
26/07/2021	00:15:00	00:15:00	74.6	96.5
26/07/2021	00:30:00	00:15:00	72.8	96.8
26/07/2021	00:45:00	00:15:00	75.6	97.4
26/07/2021	01:00:00	00:15:00	72.6	99.4
26/07/2021	01:15:00	00:15:00	75.0	97.9
26/07/2021	01:30:00	00:15:00	72.2	97.6
26/07/2021	01:45:00	00:15:00	70.7	96.5
26/07/2021	02:00:00	00:15:00	73.1	96.6
26/07/2021	02:15:00	00:15:00	73.1	98.2
26/07/2021	02:30:00	00:15:00	74.9	98.3
26/07/2021	02:45:00	00:15:00	73.0	100.4
26/07/2021	03:00:00	00:15:00	70.3	96.0
26/07/2021	03:15:00	00:15:00	74.7	98.5
26/07/2021	03:30:00	00:15:00	69.7	95.8
26/07/2021	03:45:00	00:15:00	74.5	97.9
26/07/2021	04:00:00	00:15:00	75.7	97.1
26/07/2021	04:15:00	00:15:00	76.2	97.6
26/07/2021	04:30:00	00:15:00	77.3	98.5
26/07/2021	04:45:00	00:15:00	77.8	98.6
26/07/2021	05:00:00	00:15:00	78.3	97.3
26/07/2021	05:15:00	00:15:00	80.4	98.9
26/07/2021	05:30:00	00:15:00	82.0	99.1
26/07/2021	05:45:00	00:15:00	81.3	98.3
26/07/2021	06:00:00	00:15:00	82.5	99.4
26/07/2021	06:15:00	00:15:00	83.0	99.0
26/07/2021	06:30:00	00:15:00	84.3	99.6
26/07/2021	06:45:00	00:15:00	85.4	100.2
26/07/2021	07:00:00	00:15:00	85.3	98.6

Start Date	Start Time	Duration	LAeq	LAFMax
dd/mm/yyyy	hh:mm:ss	hh:mm:ss	dB	dB
26/07/2021	07:15:00	00:15:00	85.7	100.2
26/07/2021	07:30:00	00:15:00	85.6	99.6
26/07/2021	07:45:00	00:15:00	86.0	102.4
26/07/2021	08:00:00	00:15:00	85.3	98.6
26/07/2021	08:15:00	00:15:00	85.8	99.3
26/07/2021	08:30:00	00:15:00	85.0	98.4
26/07/2021	08:45:00	00:15:00	85.7	100.7
26/07/2021	09:00:00	00:15:00	85.2	100.5
26/07/2021	09:15:00	00:15:00	84.6	99.2
26/07/2021	09:30:00	00:15:00	84.5	98.6
26/07/2021	09:45:00	00:15:00	84.4	98.8
26/07/2021	10:00:00	00:15:00	85.1	99.7
26/07/2021	10:15:00	00:15:00	84.9	98.1
26/07/2021	10:30:00	00:15:00	84.8	98.5
26/07/2021	10:45:00	00:15:00	84.9	99.6
26/07/2021	11:00:00	00:15:00	85.3	98.4
26/07/2021	11:15:00	00:15:00	84.3	97.4
26/07/2021	11:30:00	00:15:00	85.3	100.2
26/07/2021	11:45:00	00:15:00	84.7	100.1
26/07/2021	12:00:00	00:15:00	84.9	98.2
26/07/2021	12:15:00	00:15:00	85.1	99.3
26/07/2021	12:30:00	00:15:00	85.1	100.1
26/07/2021	12:45:00	00:15:00	84.8	98.5
26/07/2021	13:00:00	00:15:00	85.4	97.7
26/07/2021	13:15:00	00:15:00	85.0	98.9
26/07/2021	13:30:00	00:15:00	85.3	100.0
26/07/2021	13:45:00	00:15:00	83.9	100.1
26/07/2021	14:00:00	00:15:00	84.9	97.4
26/07/2021	14:15:00	00:15:00	85.2	100.0
26/07/2021	14:30:00	00:15:00	84.9	99.0
26/07/2021	14:45:00	00:15:00	84.7	99.0
26/07/2021	15:00:00	00:15:00	85.3	105.3
26/07/2021	15:15:00	00:15:00	85.2	98.8
26/07/2021	15:30:00	00:15:00	85.7	98.9
26/07/2021	15:45:00	00:15:00	85.8	98.3
26/07/2021	16:00:00	00:15:00	85.9	98.1
26/07/2021	16:15:00	00:15:00	86.4	99.9
26/07/2021	16:30:00	00:15:00	86.2	98.7
26/07/2021	16:45:00	00:15:00	85.4	99.8
26/07/2021	17:00:00	00:15:00	86.2	99.6
26/07/2021	17:15:00	00:15:00	85.8	99.9
26/07/2021	17:30:00	00:15:00	85.6	97.2
26/07/2021	17:45:00	00:15:00	85.7	100.0
26/07/2021	18:00:00	00:15:00	85.3	101.1
26/07/2021	18:15:00	00:15:00	85.3	99.6
26/07/2021	18:30:00	00:15:00	84.3	98.5
26/07/2021	18:45:00	00:15:00	84.3	102.9
26/07/2021	19:00:00	00:15:00	83.8	100.0
26/07/2021	19:15:00	00:15:00	82.7	98.6
26/07/2021	19:30:00	00:15:00	83.3	97.9

Start Date	Start Time	Duration	LAeq	LAFMax
dd/mm/yyyy	hh:mm:ss	hh:mm:ss	dB	dB
26/07/2021	19:45:00	00:15:00	82.4	100.2
26/07/2021	20:00:00	00:15:00	81.3	99.1
26/07/2021	20:15:00	00:15:00	82.4	97.3
26/07/2021	20:30:00	00:15:00	82.0	98.7
26/07/2021	20:45:00	00:15:00	81.6	98.1
26/07/2021	21:00:00	00:15:00	80.6	99.5
26/07/2021	21:15:00	00:15:00	80.4	97.8
26/07/2021	21:30:00	00:15:00	80.1	97.4
26/07/2021	21:45:00	00:15:00	79.7	100.0
26/07/2021	22:00:00	00:15:00	79.6	97.4
26/07/2021	22:15:00	00:15:00	80.0	97.4
26/07/2021	22:30:00	00:15:00	77.9	97.8
26/07/2021	22:45:00	00:15:00	78.1	97.5
26/07/2021	23:00:00	00:15:00	77.0	98.4
26/07/2021	23:15:00	00:15:00	76.6	97.7
26/07/2021	23:30:00	00:15:00	76.7	97.9
26/07/2021	23:45:00	00:15:00	76.5	97.7
27/07/2021	00:00:00	00:15:00	75.2	97.3
27/07/2021	00:15:00	00:15:00	74.1	97.7
27/07/2021	00:30:00	00:15:00	73.0	96.1
27/07/2021	00:45:00	00:15:00	74.2	98.3
27/07/2021	01:00:00	00:15:00	74.9	97.3
27/07/2021	01:15:00	00:15:00	74.4	97.3
27/07/2021	01:30:00	00:15:00	72.1	96.0
27/07/2021	01:45:00	00:15:00	75.0	99.6
27/07/2021	02:00:00	00:15:00	73.0	98.3
27/07/2021	02:15:00	00:15:00	75.2	98.0
27/07/2021	02:30:00	00:15:00	73.5	98.0
27/07/2021	02:45:00	00:15:00	75.7	98.6
27/07/2021	03:00:00	00:15:00	76.5	98.0
27/07/2021	03:15:00	00:15:00	76.3	98.5
27/07/2021	03:30:00	00:15:00	74.9	96.6
27/07/2021	03:45:00	00:15:00	74.9	97.3
27/07/2021	04:00:00	00:15:00	75.0	98.2
27/07/2021	04:15:00	00:15:00	74.1	98.5
27/07/2021	04:30:00	00:15:00	75.7	97.9
27/07/2021	04:45:00	00:15:00	77.9	98.1
27/07/2021	05:00:00	00:15:00	78.7	98.2
27/07/2021	05:15:00	00:15:00	79.8	100.7
27/07/2021	05:30:00	00:15:00	80.6	98.6
27/07/2021	05:45:00	00:15:00	80.6	100.4
27/07/2021	06:00:00	00:15:00	81.1	99.9
27/07/2021	06:15:00	00:15:00	83.3	99.7
27/07/2021	06:30:00	00:15:00	83.8	98.7
27/07/2021	06:45:00	00:15:00	84.9	101.2
27/07/2021	07:00:00	00:15:00	85.5	101.1
27/07/2021	07:15:00	00:15:00	86.2	100.3
27/07/2021	07:30:00	00:15:00	85.8	99.1
27/07/2021	07:45:00	00:15:00	86.3	99.2
27/07/2021	08:00:00	00:15:00	86.0	100.2

Start Date	Start Time	Duration	LAeq	LAFMax
dd/mm/yyyy	hh:mm:ss	hh:mm:ss	dB	dB
27/07/2021	08:15:00	00:15:00	86.2	100.8
27/07/2021	08:30:00	00:15:00	85.2	99.7
27/07/2021	08:45:00	00:15:00	85.1	99.4
27/07/2021	09:00:00	00:15:00	85.4	99.1
27/07/2021	09:15:00	00:15:00	84.4	99.1
27/07/2021	09:30:00	00:15:00	84.8	99.8
27/07/2021	09:45:00	00:15:00	83.9	99.1
27/07/2021	10:00:00	00:15:00	84.3	99.5
27/07/2021	10:15:00	00:15:00	84.2	98.3
27/07/2021	10:30:00	00:15:00	84.2	99.6
27/07/2021	10:45:00	00:15:00	84.7	100.6
27/07/2021	11:00:00	00:15:00	84.5	98.4
27/07/2021	11:15:00	00:15:00	84.6	98.4
27/07/2021	11:30:00	00:15:00	84.7	99.1
27/07/2021	11:45:00	00:15:00	84.5	99.8
27/07/2021	12:00:00	00:15:00	84.6	97.9
27/07/2021	12:15:00	00:15:00	84.2	98.3
27/07/2021	12:30:00	00:15:00	84.5	97.6
27/07/2021	12:45:00	00:15:00	84.9	100.5
27/07/2021	13:00:00	00:15:00	85.2	98.7
27/07/2021	13:15:00	00:15:00	85.5	99.6
27/07/2021	13:30:00	00:15:00	85.5	99.2
27/07/2021	13:45:00	00:15:00	84.7	104.4
27/07/2021	14:00:00	00:15:00	85.1	98.9
27/07/2021	14:15:00	00:15:00	85.0	99.4
27/07/2021	14:30:00	00:15:00	85.1	98.9
27/07/2021	14:45:00	00:15:00	85.2	100.2
27/07/2021	15:00:00	00:15:00	85.4	98.1
27/07/2021	15:15:00	00:15:00	86.6	100.0
27/07/2021	15:30:00	00:15:00	85.7	101.3
27/07/2021	15:45:00	00:15:00	86.4	99.0
27/07/2021	16:00:00	00:15:00	86.5	101.0
27/07/2021	16:15:00	00:15:00	86.8	98.8
27/07/2021	16:30:00	00:15:00	86.9	100.6
27/07/2021	16:45:00	00:15:00	86.0	98.0
27/07/2021	17:00:00	00:15:00	86.6	98.9
27/07/2021	17:15:00	00:15:00	86.1	99.1
27/07/2021	17:30:00	00:15:00	87.1	99.7
27/07/2021	17:45:00	00:15:00	86.8	100.0
27/07/2021	18:00:00	00:15:00	86.5	101.1
27/07/2021	18:15:00	00:15:00	85.9	99.0
27/07/2021	18:30:00	00:15:00	85.3	99.2
27/07/2021	18:45:00	00:15:00	85.3	99.3
27/07/2021	19:00:00	00:15:00	84.7	99.7
27/07/2021	19:15:00	00:15:00	84.5	99.1
27/07/2021	19:30:00	00:15:00	84.3	99.6
27/07/2021	19:45:00	00:15:00	83.5	99.2
27/07/2021	20:00:00	00:15:00	83.0	99.5
27/07/2021	20:15:00	00:15:00	83.6	99.9
27/07/2021	20:30:00	00:15:00	82.6	100.1

Start Date	Start Time	Duration	LAeq	LAFMax
dd/mm/yyyy	hh:mm:ss	hh:mm:ss	dB	dB
27/07/2021	20:45:00	00:15:00	81.2	97.7
27/07/2021	21:00:00	00:15:00	81.0	97.4
27/07/2021	21:15:00	00:15:00	81.4	97.8
27/07/2021	21:30:00	00:15:00	81.2	98.3
27/07/2021	21:45:00	00:15:00	80.2	99.9
27/07/2021	22:00:00	00:15:00	81.3	98.7
27/07/2021	22:15:00	00:15:00	80.7	98.5
27/07/2021	22:30:00	00:15:00	80.3	99.4
27/07/2021	22:45:00	00:15:00	80.1	99.0
27/07/2021	23:00:00	00:15:00	77.5	98.6
27/07/2021	23:15:00	00:15:00	78.6	99.9
27/07/2021	23:30:00	00:15:00	77.0	98.4
27/07/2021	23:45:00	00:15:00	75.3	97.1
28/07/2021	00:00:00	00:15:00	76.5	97.9
28/07/2021	00:15:00	00:15:00	77.5	99.6
28/07/2021	00:30:00	00:15:00	77.5	98.0
28/07/2021	00:45:00	00:15:00	74.3	96.8
28/07/2021	01:00:00	00:15:00	75.5	98.4
28/07/2021	01:15:00	00:15:00	75.6	98.1
28/07/2021	01:30:00	00:15:00	76.3	98.1
28/07/2021	01:45:00	00:15:00	75.1	97.6
28/07/2021	02:00:00	00:15:00	71.7	97.2
28/07/2021	02:15:00	00:15:00	74.8	96.6
28/07/2021	02:30:00	00:15:00	75.2	98.8
28/07/2021	02:45:00	00:15:00	76.6	99.9
28/07/2021	03:00:00	00:15:00	75.1	98.7
28/07/2021	03:15:00	00:15:00	76.1	98.8
28/07/2021	03:30:00	00:15:00	75.1	98.7
28/07/2021	03:45:00	00:15:00	74.3	98.6
28/07/2021	04:00:00	00:15:00	73.9	97.7
28/07/2021	04:15:00	00:15:00	76.1	98.4
28/07/2021	04:30:00	00:15:00	75.5	97.9
28/07/2021	04:45:00	00:15:00	76.8	98.8
28/07/2021	05:00:00	00:15:00	78.6	99.8
28/07/2021	05:15:00	00:15:00	79.5	99.2
28/07/2021	05:30:00	00:15:00	81.0	100.6
28/07/2021	05:45:00	00:15:00	82.1	100.3
28/07/2021	06:00:00	00:15:00	82.3	99.1
28/07/2021	06:15:00	00:15:00	83.0	100.0
28/07/2021	06:30:00	00:15:00	83.9	98.8
28/07/2021	06:45:00	00:15:00	84.6	99.7
28/07/2021	07:00:00	00:15:00	85.4	100.7
28/07/2021	07:15:00	00:15:00	85.5	101.5
28/07/2021	07:30:00	00:15:00	86.1	98.0
28/07/2021	07:45:00	00:15:00	86.1	100.3
28/07/2021	08:00:00	00:15:00	85.3	98.4
28/07/2021	08:15:00	00:15:00	85.6	99.6
28/07/2021	08:30:00	00:15:00	84.7	99.4
28/07/2021	08:45:00	00:15:00	84.6	100.0
28/07/2021	09:00:00	00:15:00	85.5	99.6

Start Date	Start Time	Duration	LAeq	LAFMax
dd/mm/yyyy	hh:mm:ss	hh:mm:ss	dB	dB
28/07/2021	09:15:00	00:15:00	86.1	99.6
28/07/2021	09:30:00	00:15:00	85.6	100.1
28/07/2021	09:45:00	00:15:00	85.7	99.2
28/07/2021	10:00:00	00:15:00	86.3	100.5
28/07/2021	10:15:00	00:15:00	86.6	100.2
28/07/2021	10:30:00	00:15:00	85.3	102.4
28/07/2021	10:45:00	00:15:00	85.3	100.7
28/07/2021	11:00:00	00:15:00	84.8	99.5
28/07/2021	11:15:00	00:15:00	85.4	99.9
28/07/2021	11:30:00	00:15:00	85.3	100.6
28/07/2021	11:45:00	00:15:00	85.0	98.2
28/07/2021	12:00:00	00:15:00	84.7	101.1
28/07/2021	12:15:00	00:15:00	86.4	101.0
28/07/2021	12:30:00	00:15:00	86.8	99.7
28/07/2021	12:45:00	00:15:00	85.0	99.1
28/07/2021	13:00:00	00:15:00	85.3	98.4
28/07/2021	13:15:00	00:15:00	85.1	99.5
28/07/2021	13:30:00	00:15:00	85.1	99.5
28/07/2021	13:45:00	00:15:00	84.7	98.3
28/07/2021	14:00:00	00:15:00	85.3	99.0
28/07/2021	14:15:00	00:15:00	85.7	98.8
28/07/2021	14:30:00	00:15:00	85.6	99.3
28/07/2021	14:45:00	00:15:00	86.1	99.6
28/07/2021	15:00:00	00:15:00	85.9	98.7
28/07/2021	15:15:00	00:15:00	86.5	101.9
28/07/2021	15:30:00	00:15:00	86.1	98.9
28/07/2021	15:45:00	00:15:00	86.0	100.0
28/07/2021	16:00:00	00:15:00	86.2	99.5
28/07/2021	16:15:00	00:15:00	86.8	100.3
28/07/2021	16:30:00	00:15:00	86.5	99.2
28/07/2021	16:45:00	00:15:00	86.6	98.4
28/07/2021	17:00:00	00:15:00	86.7	99.5
28/07/2021	17:15:00	00:15:00	86.8	99.1
28/07/2021	17:30:00	00:15:00	86.4	99.0
28/07/2021	17:45:00	00:15:00	86.1	98.5
28/07/2021	18:00:00	00:15:00	86.4	98.5
28/07/2021	18:15:00	00:15:00	85.6	98.2
28/07/2021	18:30:00	00:15:00	84.7	99.8
28/07/2021	18:45:00	00:15:00	84.8	98.5
28/07/2021	19:00:00	00:15:00	84.0	99.7
28/07/2021	19:15:00	00:15:00	83.3	98.4
28/07/2021	19:30:00	00:15:00	83.0	98.6
28/07/2021	19:45:00	00:15:00	82.9	98.7
28/07/2021	20:00:00	00:15:00	83.0	98.8
28/07/2021	20:15:00	00:15:00	83.3	98.6
28/07/2021	20:30:00	00:15:00	82.3	99.1
28/07/2021	20:45:00	00:15:00	82.2	98.2
28/07/2021	21:00:00	00:15:00	82.2	101.0
28/07/2021	21:15:00	00:15:00	81.8	98.6
28/07/2021	21:30:00	00:15:00	81.6	106.4

Start Date	Start Time	Duration	LAeq	LAFMax
dd/mm/yyyy	hh:mm:ss	hh:mm:ss	dB	dB
28/07/2021	21:45:00	00:15:00	80.9	97.8
28/07/2021	22:00:00	00:15:00	81.2	100.8
28/07/2021	22:15:00	00:15:00	80.0	98.8
28/07/2021	22:30:00	00:15:00	79.4	97.6
28/07/2021	22:45:00	00:15:00	79.4	99.2
28/07/2021	23:00:00	00:15:00	78.2	100.3
28/07/2021	23:15:00	00:15:00	78.6	99.5
28/07/2021	23:30:00	00:15:00	77.9	98.4
28/07/2021	23:45:00	00:15:00	78.7	100.6
29/07/2021	00:00:00	00:15:00	76.3	97.4
29/07/2021	00:15:00	00:15:00	76.8	98.2
29/07/2021	00:30:00	00:15:00	74.6	97.7
29/07/2021	00:45:00	00:15:00	74.5	98.0
29/07/2021	01:00:00	00:15:00	72.2	97.4
29/07/2021	01:15:00	00:15:00	74.2	100.0
29/07/2021	01:30:00	00:15:00	75.6	98.2
29/07/2021	01:45:00	00:15:00	76.7	98.0
29/07/2021	02:00:00	00:15:00	71.5	97.3
29/07/2021	02:15:00	00:15:00	72.6	98.7
29/07/2021	02:30:00	00:15:00	73.0	97.4
29/07/2021	02:45:00	00:15:00	73.8	96.8
29/07/2021	03:00:00	00:15:00	74.7	99.5
29/07/2021	03:15:00	00:15:00	75.7	98.8
29/07/2021	03:30:00	00:15:00	73.7	98.2
29/07/2021	03:45:00	00:15:00	75.3	97.7
29/07/2021	04:00:00	00:15:00	74.5	98.2
29/07/2021	04:15:00	00:15:00	74.6	98.8
29/07/2021	04:30:00	00:15:00	75.5	97.9
29/07/2021	04:45:00	00:15:00	77.3	97.9
29/07/2021	05:00:00	00:15:00	77.6	98.0
29/07/2021	05:15:00	00:15:00	79.2	100.0
29/07/2021	05:30:00	00:15:00	81.8	100.7
29/07/2021	05:45:00	00:15:00	82.1	99.3
29/07/2021	06:00:00	00:15:00	81.4	100.1
29/07/2021	06:15:00	00:15:00	83.2	99.9
29/07/2021	06:30:00	00:15:00	83.6	99.2
29/07/2021	06:45:00	00:15:00	84.5	99.6
29/07/2021	07:00:00	00:15:00	85.1	102.0
29/07/2021	07:15:00	00:15:00	86.2	99.3
29/07/2021	07:30:00	00:15:00	85.7	98.7
29/07/2021	07:45:00	00:15:00	86.0	102.3
29/07/2021	08:00:00	00:15:00	85.4	101.4
29/07/2021	08:15:00	00:15:00	85.7	100.4
29/07/2021	08:30:00	00:15:00	84.5	98.7
29/07/2021	08:45:00	00:15:00	84.8	97.8
29/07/2021	09:00:00	00:15:00	85.0	98.8
29/07/2021	09:15:00	00:15:00	84.3	99.0
29/07/2021	09:30:00	00:15:00	84.9	98.6
29/07/2021	09:45:00	00:15:00	84.5	98.1
29/07/2021	10:00:00	00:15:00	85.1	98.3

Start Date	Start Time	Duration	LAeq	LAFMax
dd/mm/yyyy	hh:mm:ss	hh:mm:ss	dB	dB
29/07/2021	10:15:00	00:15:00	84.8	98.9
29/07/2021	10:30:00	00:15:00	83.9	98.7
29/07/2021	10:45:00	00:15:00	85.4	99.4
29/07/2021	11:00:00	00:15:00	84.7	106.6
29/07/2021	11:15:00	00:15:00	84.3	99.0
29/07/2021	11:30:00	00:15:00	84.3	98.4
29/07/2021	11:45:00	00:15:00	84.6	98.0
29/07/2021	12:00:00	00:15:00	85.0	98.2
29/07/2021	12:15:00	00:15:00	85.0	99.2
29/07/2021	12:30:00	00:15:00	84.8	98.3
29/07/2021	12:45:00	00:15:00	84.8	99.3
29/07/2021	13:00:00	00:15:00	84.9	99.8
29/07/2021	13:15:00	00:15:00	84.8	100.8
29/07/2021	13:30:00	00:15:00	85.0	98.5
29/07/2021	13:45:00	00:15:00	85.1	99.5
29/07/2021	14:00:00	00:15:00	84.5	98.7
29/07/2021	14:15:00	00:15:00	85.4	98.6
29/07/2021	14:30:00	00:15:00	85.1	99.1
29/07/2021	14:45:00	00:15:00	84.8	107.4
29/07/2021	15:00:00	00:15:00	85.4	98.8
29/07/2021	15:15:00	00:15:00	85.2	102.7
29/07/2021	15:30:00	00:15:00	85.5	97.6
29/07/2021	15:45:00	00:15:00	85.5	98.4
29/07/2021	16:00:00	00:15:00	86.1	98.9
29/07/2021	16:15:00	00:15:00	86.5	99.6
29/07/2021	16:30:00	00:15:00	86.5	98.3
29/07/2021	16:45:00	00:15:00	86.4	100.5
29/07/2021	17:00:00	00:15:00	86.0	98.2
29/07/2021	17:15:00	00:15:00	86.0	97.3
29/07/2021	17:30:00	00:15:00	85.8	99.1
29/07/2021	17:45:00	00:15:00	86.5	99.3
29/07/2021	18:00:00	00:15:00	85.7	99.5
29/07/2021	18:15:00	00:15:00	85.9	99.1
29/07/2021	18:30:00	00:15:00	85.1	98.6
29/07/2021	18:45:00	00:15:00	84.9	99.3
29/07/2021	19:00:00	00:15:00	84.9	99.3
29/07/2021	19:15:00	00:15:00	84.0	100.7
29/07/2021	19:30:00	00:15:00	83.7	101.0
29/07/2021	19:45:00	00:15:00	83.6	99.8
29/07/2021	20:00:00	00:15:00	83.4	100.7
29/07/2021	20:15:00	00:15:00	82.8	98.2
29/07/2021	20:30:00	00:15:00	82.7	99.5
29/07/2021	20:45:00	00:15:00	82.3	100.0
29/07/2021	21:00:00	00:15:00	82.4	101.7
29/07/2021	21:15:00	00:15:00	81.6	97.6
29/07/2021	21:30:00	00:15:00	81.7	100.7
29/07/2021	21:45:00	00:15:00	80.6	98.4
29/07/2021	22:00:00	00:15:00	81.0	99.4
29/07/2021	22:15:00	00:15:00	79.8	99.6
29/07/2021	22:30:00	00:15:00	81.3	98.5

Start Date	Start Time	Duration	LAeq	LAFMax
dd/mm/yyyy	hh:mm:ss	hh:mm:ss	dB	dB
29/07/2021	22:45:00	00:15:00	80.4	102.8
29/07/2021	23:00:00	00:15:00	79.4	97.6
29/07/2021	23:15:00	00:15:00	78.8	99.7
29/07/2021	23:30:00	00:15:00	78.8	97.4
29/07/2021	23:45:00	00:15:00	78.3	99.0
30/07/2021	00:00:00	00:15:00	75.8	97.9
30/07/2021	00:15:00	00:15:00	76.9	97.0
30/07/2021	00:30:00	00:15:00	76.9	98.2
30/07/2021	00:45:00	00:15:00	75.9	98.0
30/07/2021	01:00:00	00:15:00	76.7	97.3
30/07/2021	01:15:00	00:15:00	74.4	98.5
30/07/2021	01:30:00	00:15:00	75.2	97.8
30/07/2021	01:45:00	00:15:00	75.7	97.2
30/07/2021	02:00:00	00:15:00	75.4	98.0
30/07/2021	02:15:00	00:15:00	76.0	99.3
30/07/2021	02:30:00	00:15:00	75.4	100.6
30/07/2021	02:45:00	00:15:00	82.4	105.0
30/07/2021	03:00:00	00:15:00	73.8	104.3
30/07/2021	03:15:00	00:15:00	65.0	88.0
30/07/2021	03:30:00	00:15:00	66.3	98.0
30/07/2021	03:45:00	00:15:00	67.3	97.7
30/07/2021	04:00:00	00:15:00	63.4	96.5
30/07/2021	04:15:00	00:15:00	64.6	90.3
30/07/2021	04:30:00	00:15:00	66.2	88.1
30/07/2021	04:45:00	00:15:00	68.4	92.1
30/07/2021	05:00:00	00:15:00	68.4	91.4
30/07/2021	05:15:00	00:15:00	73.4	92.3
30/07/2021	05:30:00	00:15:00	74.7	92.9
30/07/2021	05:45:00	00:15:00	74.1	93.0
30/07/2021	06:00:00	00:15:00	75.0	92.2
30/07/2021	06:15:00	00:15:00	76.3	92.5
30/07/2021	06:30:00	00:15:00	77.1	92.1
30/07/2021	06:45:00	00:15:00	78.0	94.2
30/07/2021	07:00:00	00:15:00	78.5	93.0
30/07/2021	07:15:00	00:15:00	78.3	92.1
30/07/2021	07:30:00	00:15:00	79.2	92.7
30/07/2021	07:45:00	00:15:00	79.0	95.2
30/07/2021	08:00:00	00:15:00	78.2	93.3
30/07/2021	08:15:00	00:15:00	78.7	92.7
30/07/2021	08:30:00	00:15:00	77.8	91.4
30/07/2021	08:45:00	00:15:00	77.7	92.2
30/07/2021	09:00:00	00:15:00	79.0	91.6
30/07/2021	09:15:00	00:15:00	78.6	92.3
30/07/2021	09:30:00	00:15:00	78.1	91.7
30/07/2021	09:45:00	00:15:00	78.4	105.1
30/07/2021	10:00:00	00:15:00	79.3	94.1
30/07/2021	10:15:00	00:15:00	78.1	92.1
30/07/2021	10:30:00	00:15:00	77.9	91.6
30/07/2021	10:45:00	00:15:00	78.3	92.1
30/07/2021	11:00:00	00:15:00	77.5	92.4

Start Date	Start Time	Duration	LAeq	LAFMax
dd/mm/yyyy	hh:mm:ss	hh:mm:ss	dB	dB
30/07/2021	11:15:00	00:15:00	78.5	95.0
30/07/2021	11:30:00	00:15:00	78.2	92.5
30/07/2021	11:45:00	00:15:00	78.1	92.2
30/07/2021	12:00:00	00:15:00	78.6	93.2
30/07/2021	12:15:00	00:15:00	78.1	92.3
30/07/2021	12:30:00	00:15:00	78.1	92.6
30/07/2021	12:45:00	00:15:00	77.8	92.3
30/07/2021	13:00:00	00:15:00	78.8	92.5
30/07/2021	13:15:00	00:15:00	78.6	92.5
30/07/2021	13:30:00	00:15:00	78.8	96.0
30/07/2021	13:45:00	00:15:00	79.1	91.6
30/07/2021	14:00:00	00:15:00	79.1	95.0
30/07/2021	14:15:00	00:15:00	78.9	91.3
30/07/2021	14:30:00	00:15:00	79.2	91.7
30/07/2021	14:45:00	00:15:00	79.1	92.1
30/07/2021	15:00:00	00:15:00	79.3	91.8
30/07/2021	15:15:00	00:15:00	80.1	92.0
30/07/2021	15:30:00	00:15:00	80.3	91.3
30/07/2021	15:45:00	00:15:00	79.8	92.4
30/07/2021	16:00:00	00:15:00	79.9	92.2
30/07/2021	16:15:00	00:15:00	79.7	92.1
30/07/2021	16:30:00	00:15:00	78.6	92.2
30/07/2021	16:45:00	00:15:00	87.2	100.6
30/07/2021	17:00:00	00:15:00	87.8	100.9
30/07/2021	17:15:00	00:15:00	88.0	100.9
30/07/2021	17:30:00	00:15:00	87.1	101.6
30/07/2021	17:45:00	00:15:00	86.8	99.2
30/07/2021	18:00:00	00:15:00	86.3	100.8
30/07/2021	18:15:00	00:15:00	85.6	98.8
30/07/2021	18:30:00	00:15:00	86.8	99.8
30/07/2021	18:45:00	00:15:00	85.6	99.9
30/07/2021	19:00:00	00:15:00	86.7	101.8
30/07/2021	19:15:00	00:15:00	85.9	102.9
30/07/2021	19:30:00	00:15:00	85.2	101.4
30/07/2021	19:45:00	00:15:00	85.7	100.5
30/07/2021	20:00:00	00:15:00	84.9	102.2
30/07/2021	20:15:00	00:15:00	84.5	99.9
30/07/2021	20:30:00	00:15:00	83.6	98.9
30/07/2021	20:45:00	00:15:00	84.2	101.8
30/07/2021	21:00:00	00:15:00	83.2	101.2
30/07/2021	21:15:00	00:15:00	82.6	98.7
30/07/2021	21:30:00	00:15:00	82.3	99.8
30/07/2021	21:45:00	00:15:00	82.4	101.0
30/07/2021	22:00:00	00:15:00	82.0	100.2
30/07/2021	22:15:00	00:15:00	81.7	98.4
30/07/2021	22:30:00	00:15:00	81.8	99.5
30/07/2021	22:45:00	00:15:00	80.9	100.6
30/07/2021	23:00:00	00:15:00	79.5	97.8
30/07/2021	23:15:00	00:15:00	79.7	98.2
30/07/2021	23:30:00	00:15:00	79.1	99.3

Start Date	Start Time	Duration	LAeq	LAFMax
dd/mm/yyyy	hh:mm:ss	hh:mm:ss	dB	dB
30/07/2021	23:45:00	00:15:00	79.2	97.9
31/07/2021	00:00:00	00:15:00	78.8	98.9
31/07/2021	00:15:00	00:15:00	79.8	99.8
31/07/2021	00:30:00	00:15:00	77.9	98.8
31/07/2021	00:45:00	00:15:00	77.5	99.1
31/07/2021	01:00:00	00:15:00	77.8	99.6
31/07/2021	01:15:00	00:15:00	77.5	99.3
31/07/2021	01:30:00	00:15:00	77.2	100.5
31/07/2021	01:45:00	00:15:00	77.9	100.6
31/07/2021	02:00:00	00:15:00	76.5	97.5
31/07/2021	02:15:00	00:15:00	77.9	99.4
31/07/2021	02:30:00	00:15:00	76.1	97.7
31/07/2021	02:45:00	00:15:00	76.4	99.2
31/07/2021	03:00:00	00:15:00	78.3	98.3
31/07/2021	03:15:00	00:15:00	76.6	98.2
31/07/2021	03:30:00	00:15:00	77.9	97.7
31/07/2021	03:45:00	00:15:00	76.3	97.8
31/07/2021	04:00:00	00:15:00	77.3	97.7
31/07/2021	04:15:00	00:15:00	76.8	97.8
31/07/2021	04:30:00	00:15:00	77.6	97.6
31/07/2021	04:45:00	00:15:00	77.8	99.0
31/07/2021	05:00:00	00:15:00	80.9	101.0
31/07/2021	05:15:00	00:15:00	80.2	98.0
31/07/2021	05:30:00	00:15:00	82.1	103.6
31/07/2021	05:45:00	00:15:00	81.7	99.6
31/07/2021	06:00:00	00:15:00	82.2	100.3
31/07/2021	06:15:00	00:15:00	82.5	98.9
31/07/2021	06:30:00	00:15:00	83.3	99.1
31/07/2021	06:45:00	00:15:00	83.6	100.1
31/07/2021	07:00:00	00:15:00	82.7	99.9
31/07/2021	07:15:00	00:15:00	84.5	99.1
31/07/2021	07:30:00	00:15:00	84.3	99.2
31/07/2021	07:45:00	00:15:00	83.4	98.7
31/07/2021	08:00:00	00:15:00	84.6	100.4
31/07/2021	08:15:00	00:15:00	84.9	99.0
31/07/2021	08:30:00	00:15:00	85.5	100.0
31/07/2021	08:45:00	00:15:00	85.0	99.2
31/07/2021	09:00:00	00:15:00	85.6	98.6
31/07/2021	09:15:00	00:15:00	86.0	98.2
31/07/2021	09:30:00	00:15:00	85.7	99.8
31/07/2021	09:45:00	00:15:00	86.2	98.0
31/07/2021	10:00:00	00:15:00	86.3	99.4
31/07/2021	10:15:00	00:15:00	86.0	98.5
31/07/2021	10:30:00	00:15:00	86.3	98.3
31/07/2021	10:45:00	00:15:00	86.1	99.2
31/07/2021	11:00:00	00:15:00	85.6	100.1
31/07/2021	11:15:00	00:15:00	85.7	99.3
31/07/2021	11:30:00	00:15:00	86.0	99.8
31/07/2021	11:45:00	00:15:00	86.2	99.6
31/07/2021	12:00:00	00:15:00	86.5	98.4

Start Date	Start Time	Duration	LAeq	LAFMax
dd/mm/yyyy	hh:mm:ss	hh:mm:ss	dB	dB
31/07/2021	12:15:00	00:15:00	85.8	98.7
31/07/2021	12:30:00	00:15:00	86.0	98.4
31/07/2021	12:45:00	00:15:00	86.0	98.0
31/07/2021	13:00:00	00:15:00	86.7	101.4
31/07/2021	13:15:00	00:15:00	87.2	110.8
31/07/2021	13:30:00	00:15:00	86.3	98.4
31/07/2021	13:45:00	00:15:00	86.3	98.2
31/07/2021	14:00:00	00:15:00	85.9	100.1
31/07/2021	14:15:00	00:15:00	85.9	98.9
31/07/2021	14:30:00	00:15:00	85.3	99.4
31/07/2021	14:45:00	00:15:00	85.8	100.7
31/07/2021	15:00:00	00:15:00	86.2	100.2
31/07/2021	15:15:00	00:15:00	86.0	98.8
31/07/2021	15:30:00	00:15:00	86.3	98.6
31/07/2021	15:45:00	00:15:00	86.1	98.7
31/07/2021	16:00:00	00:15:00	85.7	97.6
31/07/2021	16:15:00	00:15:00	86.3	97.6
31/07/2021	16:30:00	00:15:00	86.7	99.8
31/07/2021	16:45:00	00:15:00	86.7	101.4
31/07/2021	17:00:00	00:15:00	86.4	98.5
31/07/2021	17:15:00	00:15:00	86.4	105.5
31/07/2021	17:30:00	00:15:00	85.9	99.0
31/07/2021	17:45:00	00:15:00	85.4	99.5
31/07/2021	18:00:00	00:15:00	85.2	104.1
31/07/2021	18:15:00	00:15:00	86.0	100.1
31/07/2021	18:30:00	00:15:00	85.9	99.9
31/07/2021	18:45:00	00:15:00	85.2	100.8
31/07/2021	19:00:00	00:15:00	85.2	101.7
31/07/2021	19:15:00	00:15:00	85.3	99.9
31/07/2021	19:30:00	00:15:00	85.1	100.0
31/07/2021	19:45:00	00:15:00	84.7	99.6
31/07/2021	20:00:00	00:15:00	84.5	99.9
31/07/2021	20:15:00	00:15:00	83.9	99.6
31/07/2021	20:30:00	00:15:00	83.2	100.3
31/07/2021	20:45:00	00:15:00	83.5	101.2
31/07/2021	21:00:00	00:15:00	82.2	98.8
31/07/2021	21:15:00	00:15:00	81.8	98.0
31/07/2021	21:30:00	00:15:00	82.7	99.3
31/07/2021	21:45:00	00:15:00	82.3	97.7
31/07/2021	22:00:00	00:15:00	81.3	98.2
31/07/2021	22:15:00	00:15:00	81.9	98.6
31/07/2021	22:30:00	00:15:00	80.4	99.1
31/07/2021	22:45:00	00:15:00	80.5	100.8
31/07/2021	23:00:00	00:15:00	80.2	100.6
31/07/2021	23:15:00	00:15:00	79.5	98.2
31/07/2021	23:30:00	00:15:00	78.9	97.5
31/07/2021	23:45:00	00:15:00	79.5	98.4
01/08/2021	00:00:00	00:15:00	79.6	98.0
01/08/2021	00:15:00	00:15:00	77.6	98.1
01/08/2021	00:30:00	00:15:00	77.9	98.0

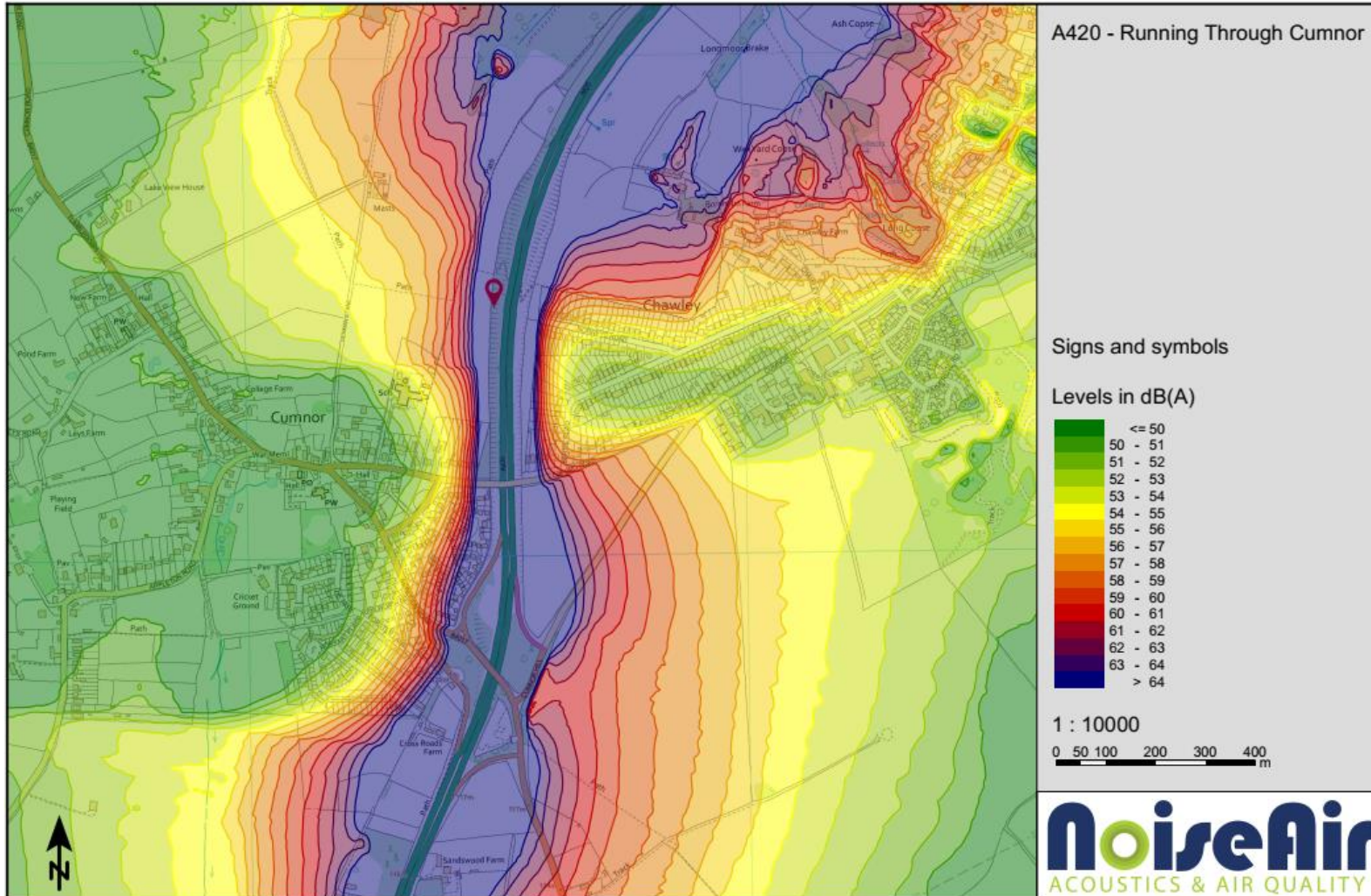
Start Date	Start Time	Duration	LAeq	LAFMax
dd/mm/yyyy	hh:mm:ss	hh:mm:ss	dB	dB
01/08/2021	00:45:00	00:15:00	79.3	99.7
01/08/2021	01:00:00	00:15:00	77.3	98.4
01/08/2021	01:15:00	00:15:00	75.6	96.3
01/08/2021	01:30:00	00:15:00	76.1	97.6
01/08/2021	01:45:00	00:15:00	75.8	97.9
01/08/2021	02:00:00	00:15:00	74.0	96.3
01/08/2021	02:15:00	00:15:00	75.0	97.0
01/08/2021	02:30:00	00:15:00	74.8	98.4
01/08/2021	02:45:00	00:15:00	74.6	97.6
01/08/2021	03:00:00	00:15:00	74.5	97.2
01/08/2021	03:15:00	00:15:00	73.1	96.9
01/08/2021	03:30:00	00:15:00	76.1	97.4
01/08/2021	03:45:00	00:15:00	73.2	96.7
01/08/2021	04:00:00	00:15:00	75.7	97.6
01/08/2021	04:15:00	00:15:00	75.4	101.5
01/08/2021	04:30:00	00:15:00	74.8	97.7
01/08/2021	04:45:00	00:15:00	75.2	98.9
01/08/2021	05:00:00	00:15:00	75.3	97.8
01/08/2021	05:15:00	00:15:00	76.2	98.6
01/08/2021	05:30:00	00:15:00	77.3	99.5
01/08/2021	05:45:00	00:15:00	78.2	102.2
01/08/2021	06:00:00	00:15:00	76.9	98.1
01/08/2021	06:15:00	00:15:00	80.3	101.8
01/08/2021	06:30:00	00:15:00	80.7	101.0
01/08/2021	06:45:00	00:15:00	80.1	97.8
01/08/2021	07:00:00	00:15:00	80.2	99.1
01/08/2021	07:15:00	00:15:00	79.1	98.4
01/08/2021	07:30:00	00:15:00	81.7	98.8
01/08/2021	07:45:00	00:15:00	81.0	99.8
01/08/2021	08:00:00	00:15:00	82.1	99.1
01/08/2021	08:15:00	00:15:00	82.5	98.8
01/08/2021	08:30:00	00:15:00	83.1	98.2
01/08/2021	08:45:00	00:15:00	83.2	98.8
01/08/2021	09:00:00	00:15:00	83.1	99.9
01/08/2021	09:15:00	00:15:00	84.3	98.5
01/08/2021	09:30:00	00:15:00	85.3	100.3
01/08/2021	09:45:00	00:15:00	84.8	98.8
01/08/2021	10:00:00	00:15:00	85.0	100.7
01/08/2021	10:15:00	00:15:00	85.6	100.9
01/08/2021	10:30:00	00:15:00	85.9	99.0
01/08/2021	10:45:00	00:15:00	85.7	99.2
01/08/2021	11:00:00	00:15:00	85.7	98.5
01/08/2021	11:15:00	00:15:00	86.1	100.0
01/08/2021	11:30:00	00:15:00	86.2	97.8
01/08/2021	11:45:00	00:15:00	86.2	100.5
01/08/2021	12:00:00	00:15:00	85.7	103.2
01/08/2021	12:15:00	00:15:00	86.5	100.6
01/08/2021	12:30:00	00:15:00	86.3	98.3
01/08/2021	12:45:00	00:15:00	86.6	99.3
01/08/2021	13:00:00	00:15:00	86.7	99.6

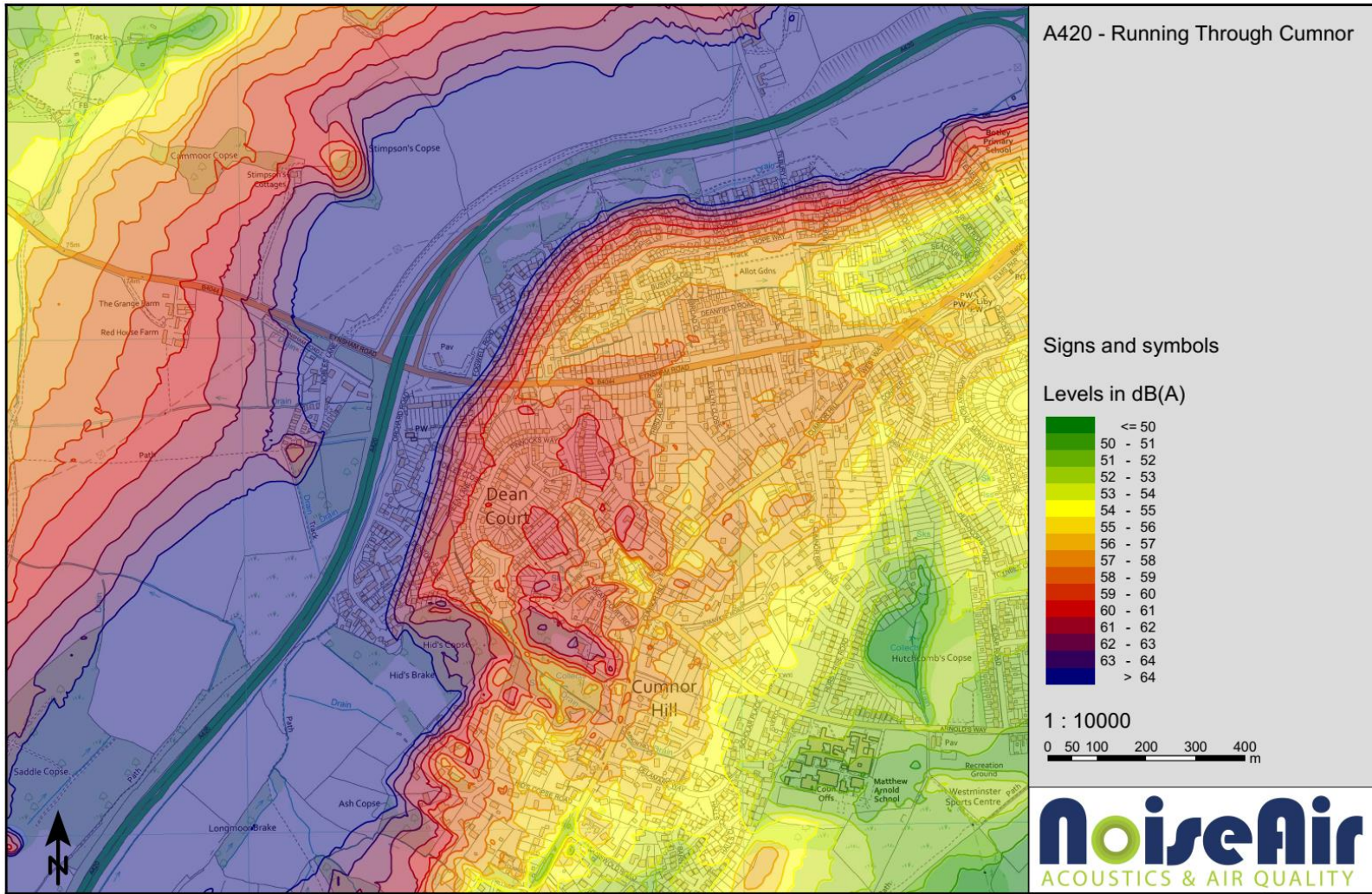
Start Date	Start Time	Duration	LAeq	LAFMax
dd/mm/yyyy	hh:mm:ss	hh:mm:ss	dB	dB
01/08/2021	13:15:00	00:15:00	86.7	98.5
01/08/2021	13:30:00	00:15:00	86.8	100.1
01/08/2021	13:45:00	00:15:00	86.6	100.2
01/08/2021	14:00:00	00:15:00	86.5	99.6
01/08/2021	14:15:00	00:15:00	86.5	99.3
01/08/2021	14:30:00	00:15:00	86.2	101.4
01/08/2021	14:45:00	00:15:00	86.7	100.5
01/08/2021	15:00:00	00:15:00	86.2	100.0
01/08/2021	15:15:00	00:15:00	86.7	100.1
01/08/2021	15:30:00	00:15:00	87.1	99.8
01/08/2021	15:45:00	00:15:00	87.0	100.3
01/08/2021	16:00:00	00:15:00	86.7	101.8
01/08/2021	16:15:00	00:15:00	86.3	100.3
01/08/2021	16:30:00	00:15:00	87.0	99.5
01/08/2021	16:45:00	00:15:00	87.3	102.6
01/08/2021	17:00:00	00:15:00	87.0	101.6
01/08/2021	17:15:00	00:15:00	87.2	99.8
01/08/2021	17:30:00	00:15:00	87.2	100.2
01/08/2021	17:45:00	00:15:00	86.7	99.3
01/08/2021	18:00:00	00:15:00	86.9	101.7
01/08/2021	18:15:00	00:15:00	86.3	99.8
01/08/2021	18:30:00	00:15:00	86.2	98.9
01/08/2021	18:45:00	00:15:00	85.9	98.5
01/08/2021	19:00:00	00:15:00	85.6	105.5
01/08/2021	19:15:00	00:15:00	85.9	100.5
01/08/2021	19:30:00	00:15:00	85.1	98.9
01/08/2021	19:45:00	00:15:00	85.1	100.0
01/08/2021	20:00:00	00:15:00	85.0	98.7
01/08/2021	20:15:00	00:15:00	84.4	100.3
01/08/2021	20:30:00	00:15:00	83.9	98.8
01/08/2021	20:45:00	00:15:00	83.5	99.7
01/08/2021	21:00:00	00:15:00	83.1	98.3
01/08/2021	21:15:00	00:15:00	81.8	99.5
01/08/2021	21:30:00	00:15:00	83.0	100.3
01/08/2021	21:45:00	00:15:00	82.7	98.2
01/08/2021	22:00:00	00:15:00	80.2	98.1
01/08/2021	22:15:00	00:15:00	80.7	98.4
01/08/2021	22:30:00	00:15:00	81.7	98.2
01/08/2021	22:45:00	00:15:00	79.4	98.2
01/08/2021	23:00:00	00:15:00	80.7	99.1
01/08/2021	23:15:00	00:15:00	78.9	98.1
01/08/2021	23:30:00	00:15:00	79.5	97.6
01/08/2021	23:45:00	00:15:00	78.6	97.5
02/08/2021	00:00:00	00:15:00	78.3	98.3
02/08/2021	00:15:00	00:15:00	77.1	98.2
02/08/2021	00:30:00	00:15:00	77.2	99.2
02/08/2021	00:45:00	00:15:00	76.7	97.6
02/08/2021	01:00:00	00:15:00	77.3	98.7
02/08/2021	01:15:00	00:15:00	77.4	97.8
02/08/2021	01:30:00	00:15:00	77.0	101.1

Start Date	Start Time	Duration	LAeq	LAFMax
dd/mm/yyyy	hh:mm:ss	hh:mm:ss	dB	dB
02/08/2021	01:45:00	00:15:00	73.9	98.4
02/08/2021	02:00:00	00:15:00	74.7	97.6
02/08/2021	02:15:00	00:15:00	73.9	98.1
02/08/2021	02:30:00	00:15:00	74.8	96.9
02/08/2021	02:45:00	00:15:00	74.2	98.3
02/08/2021	03:00:00	00:15:00	75.4	98.3
02/08/2021	03:15:00	00:15:00	75.6	97.8
02/08/2021	03:30:00	00:15:00	75.6	97.8
02/08/2021	03:45:00	00:15:00	75.1	98.9
02/08/2021	04:00:00	00:15:00	74.3	98.5
02/08/2021	04:15:00	00:15:00	76.5	97.9
02/08/2021	04:30:00	00:15:00	75.4	97.5
02/08/2021	04:45:00	00:15:00	77.2	98.1
02/08/2021	05:00:00	00:15:00	79.7	98.6
02/08/2021	05:15:00	00:15:00	81.5	101.8
02/08/2021	05:30:00	00:15:00	82.9	100.3
02/08/2021	05:45:00	00:15:00	82.0	100.1
02/08/2021	06:00:00	00:15:00	83.2	100.2
02/08/2021	06:15:00	00:15:00	83.7	99.7
02/08/2021	06:30:00	00:15:00	84.1	100.1
02/08/2021	06:45:00	00:15:00	85.1	99.6
02/08/2021	07:00:00	00:15:00	85.8	100.2
02/08/2021	07:15:00	00:15:00	85.4	99.9
02/08/2021	07:30:00	00:15:00	86.2	99.2
02/08/2021	07:45:00	00:15:00	86.3	100.3
02/08/2021	08:00:00	00:15:00	85.7	102.0
02/08/2021	08:15:00	00:15:00	85.8	101.3
02/08/2021	08:30:00	00:15:00	85.0	98.5
02/08/2021	08:45:00	00:15:00	85.2	100.1
02/08/2021	09:00:00	00:15:00	85.2	98.6
02/08/2021	09:15:00	00:15:00	84.9	99.2
02/08/2021	09:30:00	00:15:00	85.1	99.7
02/08/2021	09:45:00	00:15:00	85.4	101.1
02/08/2021	10:00:00	00:15:00	85.2	98.5
02/08/2021	10:15:00	00:15:00	84.9	98.5
02/08/2021	10:30:00	00:15:00	84.8	98.3
02/08/2021	10:45:00	00:15:00	84.6	99.2
02/08/2021	11:00:00	00:15:00	84.6	98.2
02/08/2021	11:15:00	00:15:00	84.9	98.4
02/08/2021	11:30:00	00:15:00	85.1	102.6
02/08/2021	11:45:00	00:15:00	85.0	98.8
02/08/2021	12:00:00	00:15:00	84.8	99.7

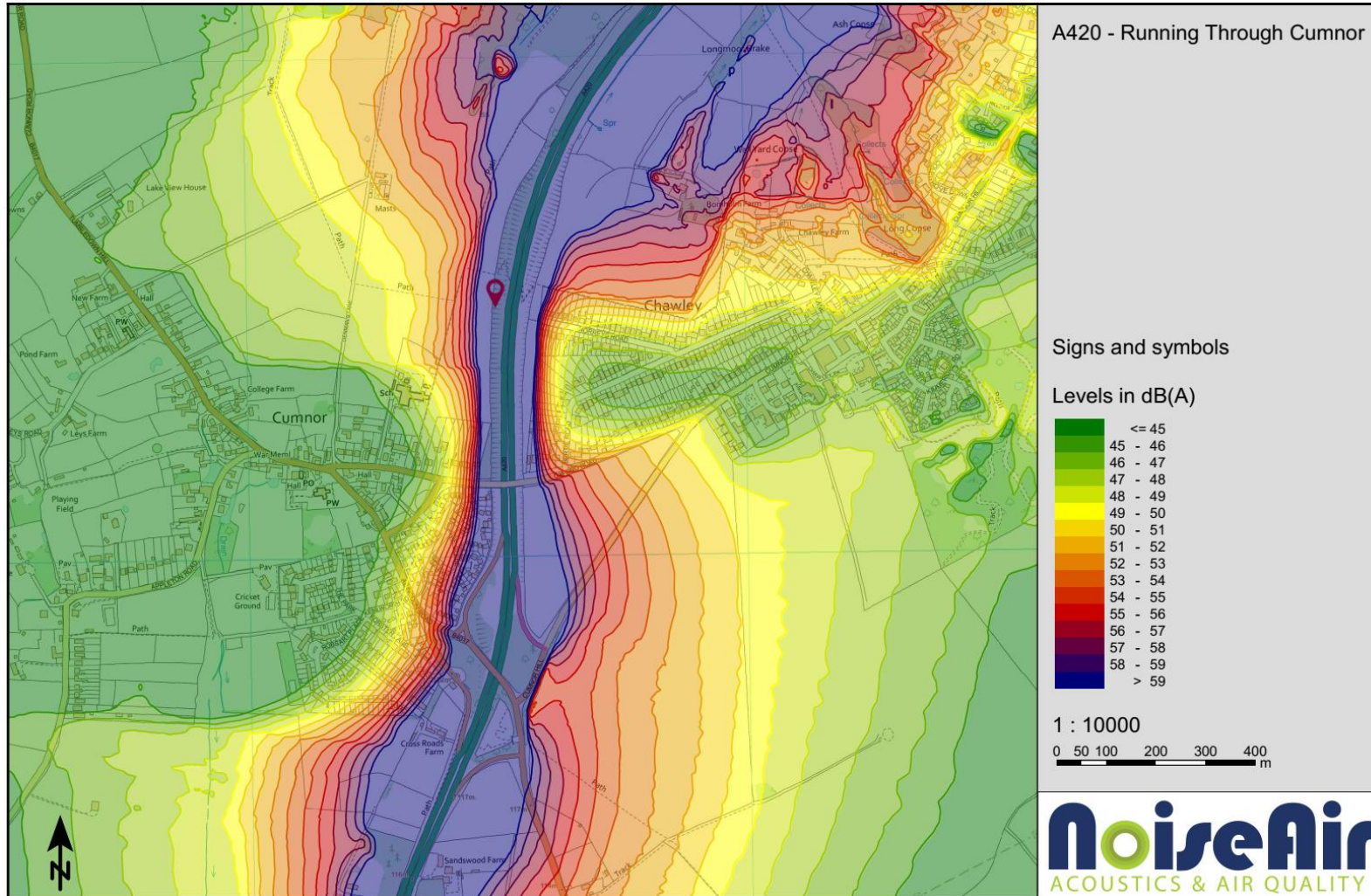
APPENDIX C – 3D SOUND MAPS

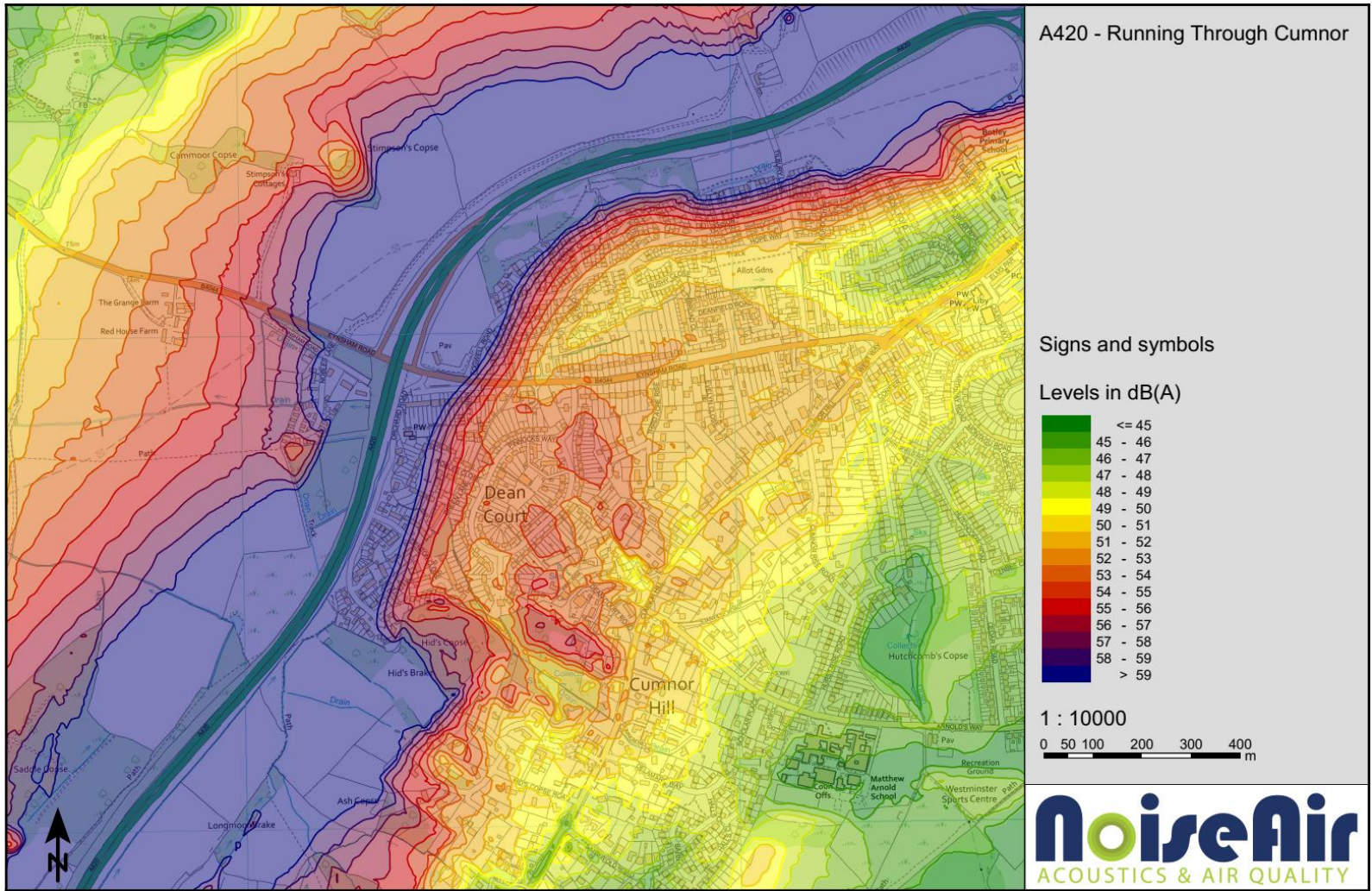
Daytime dB LAeq,16hr



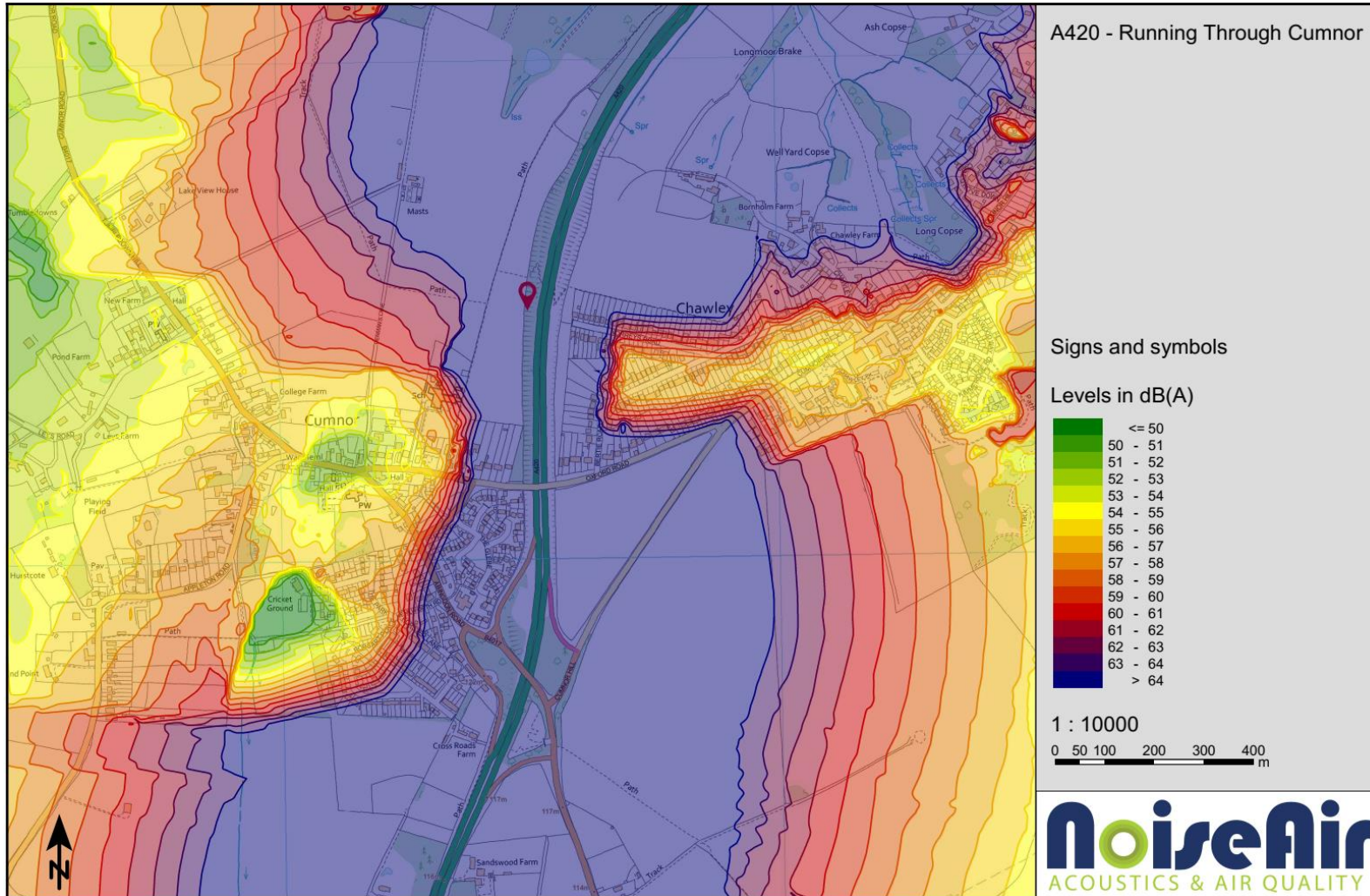


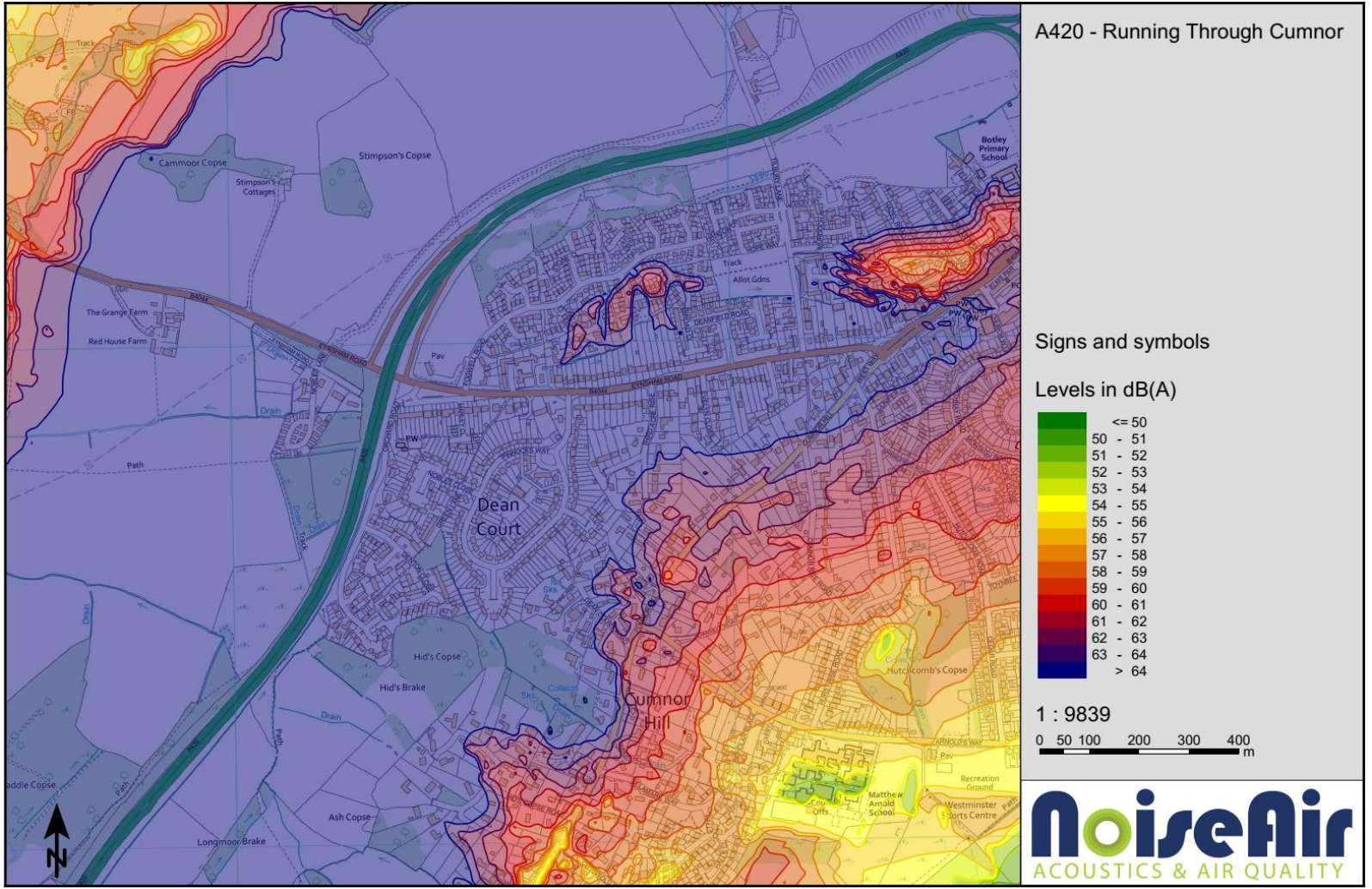
Night-time dB LAeq,8hr



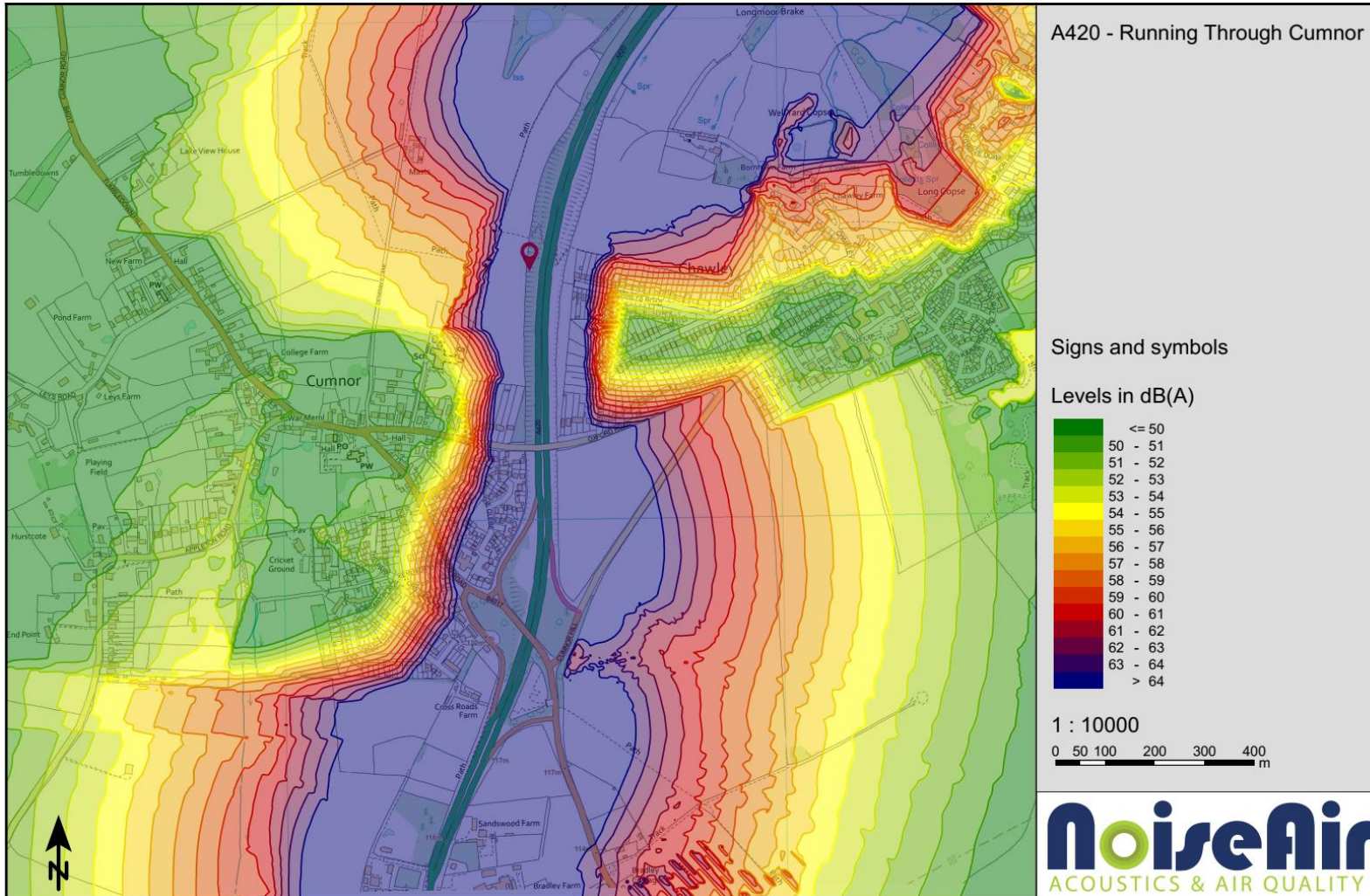


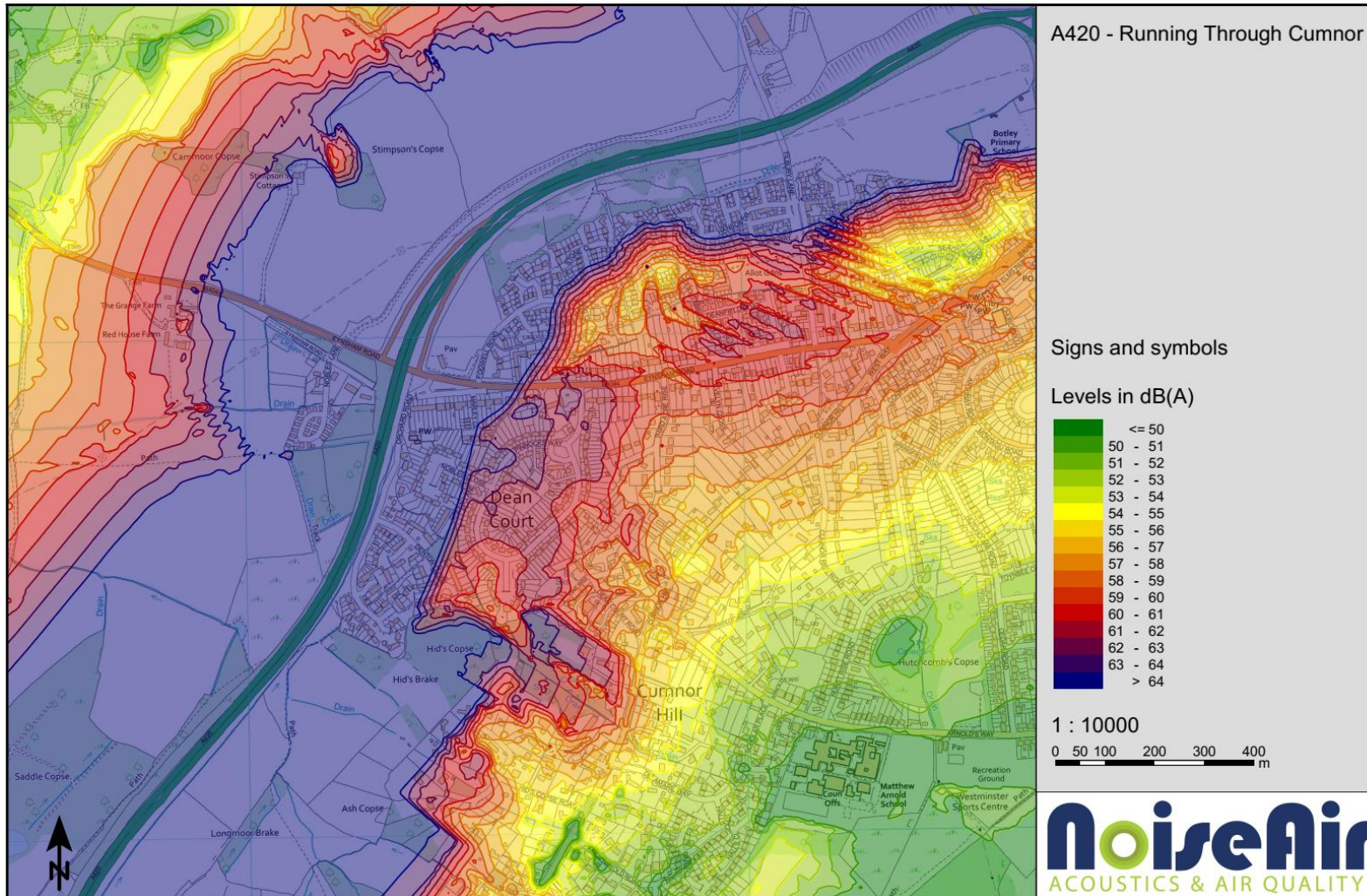
Daytime dB L_{Amax}





Night-time dB L_{Amax}





This page has been left blank intentionally

APPENDIX D - GLOSSARY

A-weighted sound pressure, p_A	Value of overall sound pressure, measured in pascals (Pa), after the electrical signal derived from a microphone has been passed through an A-weighting network. <i>NOTE: The A-weighting network modifies the electrical response of a sound level meter with frequency in approximately the same way as the sensitivity of the human hearing system.</i>
A-weighted sound pressure level, L_{pA}	Quantity of A-weighted sound pressure in decibels (dBA).
Acoustic environment	Sound from all sound sources as modified by the environment [BS ISO 12913-1:2013].
Ambient sound	Totally encompassing sound in a given situation at a given time, usually composed of sound from many sources near and far. <i>NOTE: The ambient sound comprises the residual sound and the specific sound when present.</i>
Ambient sound level, $L_a = L_{Aeq,T}$ (BS4142:2014)	Equivalent continuous A-weighted sound pressure level of the totally encompassing sound in a given situation at a given time, usually from many sources near and far, at the assessment location over a given time interval, T <i>NOTE: The ambient sound level is a measure of the residual sound and the specific sound when present.</i>
Background sound	Underlying level of sound over a period, T, which might in part be an indication of relative quietness at a given location.
Background sound level, $L_{A90,T}$ (BS4142:2014)	A-weighted sound pressure level that is exceeded by the residual sound at the assessment location for 90% of a given time interval, T, measured using time weighting F and quoted to the nearest whole number of decibels.
Break-in	Noise transmission into a structure from outside.
Break-out	Noise transmission from inside a structure to the outside.
Cross-talk	Noise transmission between one room and another room or space via a duct or other path.
C_{tr}	Correction term applied against the sound insulation single-number values (R_w , D_w , and $D_{nT,w}$) to provide a weighting against low frequency performance. <i>NOTE: The reference values used within the C_{tr} calculation are based on urban traffic noise.</i>
Equivalent continuous A-weighted sound pressure level, $L_{Aeq,T}$	Value of the A-weighted sound pressure level in decibels (dB) of a continuous, steady sound that, within a specified time interval, T, has the same mean-squared sound pressure as the sound under consideration that varies with time.
Equivalent continuous A-weighted sound pressure level, $L_{Aeq,T}$ (BS4142:2014)	Value of the A-weighted sound pressure level in decibels of continuous steady sound that, within a specified time interval, $T = t_2 - t_1$, has the same mean-squared sound pressure as a sound that varies with time.
Equivalent sound absorption area of a room, A	Hypothetical area of a totally absorbing surface without diffraction effects, expressed in square metres (m ²), which, if it were the only absorbing element in the room, would give the same reverberation time as the room under consideration
Facade level	Sound pressure level 1 m in front of the façade. <i>NOTE: Facade level measurements of L_{pA} are typically 1 dB to 2 dB higher than corresponding free-field measurements because of the reflection from the facade.</i>
Free-field level	Sound pressure level away from reflecting surfaces. <i>NOTE: Measurements made 1.2 m to 1.5 m above the ground and at least 3.5 m away from other reflecting surfaces are usually regarded as free-field. To minimize the effect of reflections the measuring position has to be at least 3.5 m to the side of the reflecting surface (i.e. not 3.5 m from the reflecting surface in the direction of the source). Estimates of noise from aircraft overhead usually include a correction of 2 dB to allow for reflections from the ground.</i>

Impact sound pressure level, L_i	Average sound pressure level in a specific frequency band in a room below a floor when it is excited by a standard tapping machine or equivalent.
Indoor ambient noise	Noise in a given situation at a given time, usually composed of noise from many sources, inside and outside the building, but excluding noise from activities of the occupants. <i>NOTE: The location(s) within the room at which the ambient indoor noise is to be measured or calculated ought to be considered.</i>
Measurement time interval, T_m (BS4142:2014)	Total time over which measurements are taken. <i>NOTE: This may consist of the sum of a number of non-contiguous, short-term measurement time intervals.</i>
Noise criteria	Numerical indices used to define design goals in a given space.
Noise rating, NR	Graphical method for rating a noise by comparing the noise spectrum with a family of noise rating curves.
Normalised impact sound pressure level, L_n	Impact sound pressure level normalized for a standard absorption area in the receiving room. <i>NOTE: Normalised impact sound pressure level is usually used to characterize the insulation of a floor in a laboratory against impact sound in a stated frequency band.</i>
Octave band	Band of frequencies in which the upper limit of the band is twice the frequency of the lower limit.
Percentile level, $L_{AN,T}$	A-weighted sound pressure level obtained using time-weighting "F", which is exceeded for $N\%$ of a specified time interval.
Reference time interval, T_r (BS4142:2014)	Specified interval over which the specific sound level is determined. <i>NOTE: This is 1 h during the day from 07:00 h to 23:00 h and a shorter period of 15 min at night from 23:00 h to 07:00 h.</i>
Residual sound (BS4142:2014)	Ambient sound remaining at the assessment location when the specific sound source is suppressed to such a degree that it does not contribute to the ambient sound.
Residual sound level, $L_r = L_{Aeq,T}$ (BS4142:2014)	Equivalent continuous A-weighted sound pressure level of the residual sound at the assessment location over a given time interval, T.
Rating level, L_{Ar,T_r}	Equivalent continuous A-weighted sound pressure level of the noise, plus any adjustment for the characteristic features of the noise. <i>NOTE: This is used in BS 7445 and BS 4142 for rating industrial noise, where the noise is the specific noise from the source under investigation.</i>
Reverberation time, T	Time that would be required for the sound pressure level to decrease by 60 dB after the sound source has stopped.
Sound exposure level, L_{AE}	Level of a sound, of 1 s duration, that has the same sound energy as the actual noise event considered.
Sound level difference, D	Difference between the sound pressure level in the source room and the sound pressure level in the receiving room.
Sound pressure, p	Root-mean-square value of the variation in air pressure, measured in pascals (Pa) above and below atmospheric pressure, caused by the sound.
Sound pressure level, L_p	Quantity of sound pressure, in decibels (dB).
Sound reduction index, R	Laboratory measure of the sound insulating properties of a material or building element in a stated frequency band.

Specific sound level, $L_s = L_{Aeq,T_r}$ (BS4142:2014)	Equivalent continuous A-weighted sound pressure level produced by the specific sound source at the assessment location over a given reference time interval, T_r .
Specific sound source (BS4142:2014)	Sound source being assessed.
Standardised impact sound pressure level, L'_{nT}	Impact sound pressure level normalized to a reverberation time in the receiving room of 0.5 s.
Standardised level difference, D_{nT}	Difference in sound level between a pair of rooms, in a stated frequency band, normalized to a reference reverberation time of 0.5 s for dwellings.
Groundborne noise	Audible noise caused by the vibration of elements of a structure, for which the vibration propagation path from the source is partially or wholly through the ground. <i>NOTE Common sources of ground-borne noise include railways and heavy construction work on adjacent construction sites.</i>
Structure-borne noise	Audible noise caused by the vibration of elements of a structure, the source of which is within a building or structure with common elements. <i>NOTE Common sources of structure-borne noise include building services plant, manufacturing machinery and construction or demolition of the structure.</i>
Third octave band	Band of frequencies in which the upper limit of the band is 2% times the frequency of the lower limit.
Weighted level difference, D_w	Single-number quantity that characterizes airborne sound insulation between rooms, but which is not adjusted to reference conditions. <i>NOTE Weighted level difference is used to characterize the insulation between rooms in a building as they are. Values cannot normally be compared with measurements made under other conditions (see BS EN ISO 717-1).</i>
Weighted normalised impact sound pressure level, $L'_{n,w}$	Single-number quantity used to characterize the impact sound insulation of floors over a range of frequencies.
Weighted sound reduction index, R_w	Single-number quantity which characterizes the airborne sound insulating properties of a material or
Weighted standardised impact sound pressure level $L'_{nT,w}$	Single-number quantity used to characterize the impact sound insulation of floors over a range of frequencies.
Weighted standardised level difference, $D_{nT,w}$	Single-number quantity that characterizes the airborne sound insulation between rooms.

Symbols

D_w	Weighted level difference (dB)
D_{nT}	Standardized level difference (dB)
$D_{nT,w}$	Weighted standardized level difference (dB)
L_{Amax}	Maximum noise level (dB)
$L_{Ar,T}$	Rating level (dB)
L_n	Normalised impact sound pressure level (dB)
L'_{nT}	Standardised impact sound pressure level (dB)
$L'_{nT,w}$	Weighted standardised impact sound pressure level (dB)
$L'_{n,w}$	Weighted normalised impact sound pressure level (dB)
L_p	Sound pressure level (dB)
L_{pA}	A-weighted sound pressure level (dB)
$L_{AN,T}$	Percentile level (dB)
L_{AE}	Sound exposure level (dB)
$L_{Aeq,T}$	Equivalent continuous A-weighted sound pressure level (dB)
p	Sound pressure (Pa)
p_A	A-weighted sound pressure (dB)
$p_A(t)$	Instantaneous A-weighted sound pressure (Pa)

R	Sound reduction index (dB)
R_w	Weighted sound reduction index (dB)
T	Time interval (also used for reverberation time) (s)
t_0	Reference time interval (s)

NoiseAir Limited

Specialist acoustics and air quality consultants providing a fast, professional, cost-effective service across the UK.

Over 35 years of experience in the field.

Contact us now for a free, no obligation quote or to discuss your requirements.

THE COUNTING HOUSE, HIGH STREET, LUTTERWORTH.
LE17 4AY

UNIT 14, CHAPEL COURT, WERVIN, CHESTER. CH2 4BT

TEL. 0116 272 5908

EMAIL. INFO@NOISEAIR.CO.UK

